



## TECHNICAL REFERENCE GUIDE

SOURCE		TARGET
GroupWise	→	Microsoft Exchange/Outlook (2010, 2007)

# EXECUTIVE SUMMARY

This *White Paper* provides detailed information about how to migrate multiple user mailboxes from **Novell GroupWise** to **Microsoft Exchange/Outlook (2010, 2007)** in batch mode.

It contains recommendations about preparing the Source and Target message platforms/servers to ensure the proper permissions are in place, and thus eliminating the reliance on individual user passwords.

It also provides in-depth information about specific features that alter the default behavior of Transend Migrator, and identifies best practices that enhance migration efficiency.

Step-by-step instructions detail how to configure the tool and perform the migration from beginning to end.

## Need more help?

If you can't find the information you seek, please view the Help File, which contains the most detailed information about every feature within the tool, including additional best practices.

Please also contact us directly to get answers to your questions, as well as inform us of what's missing in this White Paper – we're always looking for ways to improve our offering, and documentation is an important piece of the puzzle.

## Table of Contents

<b>Section 1: Introduction .....</b>	<b>1</b>
<b>Section 2: User Interface Overview .....</b>	<b>1</b>
<b>Section 3: Preparation of Source and Target Environments.....</b>	<b>3</b>
Preparing GroupWise for Migration .....	3
Trusted Mode for GroupWise 2012.....	3
Trusted Mode for GroupWise 6.5 through version 8.....	5
Proxy Mode .....	6
Preparing Exchange Server (2010, 2007) for Migration .....	7
Setting Full Access Permissions.....	7
Impersonation .....	7
Delegate Access .....	8
<b>Section 4: Batch Migration Setup .....</b>	<b>9</b>
Assigning Batch Variables .....	9
Loading User Mailbox Account Data.....	10
Validate Batch Setup .....	12
Entity Matching.....	13
Migrated Checkboxes .....	15
Enable Migration .....	15
Copy Configuration.....	16
<b>Section 5: Folders .....</b>	<b>17</b>
Folder Convert List .....	17
Folder Exclude List.....	17
Folder Mapping .....	19
<b>Section 6: Address Translation.....</b>	<b>21</b>
<b>Section 7: Migrating Messages/Folders (Step-by-step).....</b>	<b>22</b>
GroupWise Considerations .....	22
How to avoid MAPI Conflicts .....	23
Exchange/Outlook (2010, 2007) Considerations .....	23
<b>Section 8: Migrating Address Books (Step-by-step) .....</b>	<b>24</b>
<b>Section 9: Migrating Calendar Entries (Step-by-step) .....</b>	<b>25</b>
<b>Section 10: Migrating Tasks &amp; To-do Items (Step-by-Step) .....</b>	<b>26</b>
<b>Section 11: Custom Options .....</b>	<b>27</b>
Commonly Used Custom Features .....	28
Message Deduping .....	29
<b>Section 12: Command Line Processing .....</b>	<b>32</b>
<b>Section 13: Migration Monitor.....</b>	<b>34</b>
<b>Section 14: Concurrent Migrations.....</b>	<b>34</b>
Performance .....	34
Adding Migration Workstations .....	35
Calculating Migration Time .....	35
<b>Section 15: Schedule Migration .....</b>	<b>36</b>
<b>Section 16: Reporting / Logging .....</b>	<b>37</b>
Reporting .....	37
Logging .....	38
<b>Section 17: Troubleshooting .....</b>	<b>39</b>
<b>Section 18: Technical Support .....</b>	<b>41</b>

## Section 1: Introduction

---

This *Technical Reference Guide* details how to perform a batch migration of the following data types using Transend Migrator:

- Email Messages/Folders
- Address Books
- Calendar Entries
- Tasks/To Do Items

For more detailed information about your specific application, security requirements, and additional migration options, please review the **Help File**. The Transend Migrator Help File is context sensitive. Selecting a help button will take you to the specific section in the Help File related to the screen you are in.

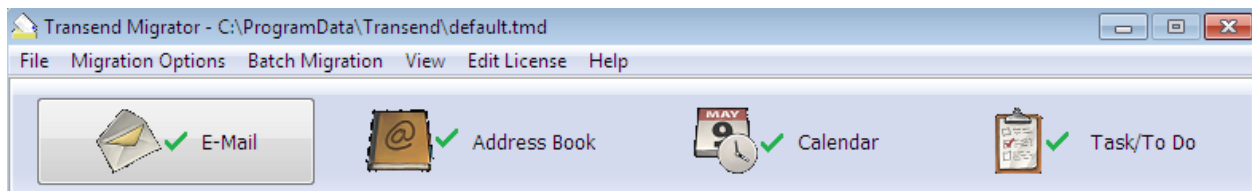
## Section 2: User Interface Overview

---

Transend Migrator contains an easy to use interface, designed to simplify the migration experience while allowing for maximum flexibility. Setting up your project to convert E-mail, Address Books, Calendars, and Tasks is accomplished within one user interface allowing you to quickly complete your migration in one run.

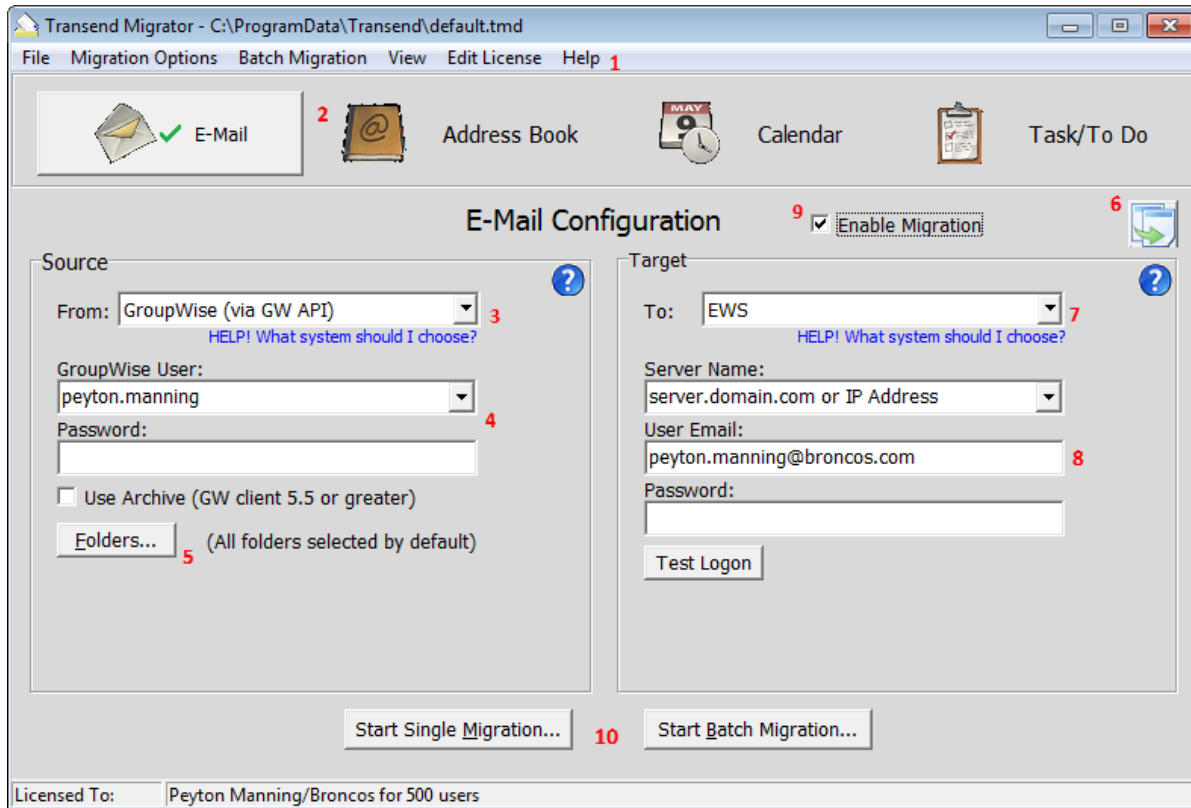
### Menu Bar

The Menu Bar is where you will make your data type selections. The top level Menu is where you will find additional commands for saving configurations, setting various migration options, setting and viewing logging and reporting options, and setting up batch migrations for multiple users.



### User Interface

The following screen is an example of the Transend Migrator user interface. The same interface is used whether you are migrating a single user mailbox or multiple user mailboxes at once (Batch Mode). Each screen for E-mail, Address Book, Calendar, or Task/To Do items is similar. Differences relate to the specific item types. Please review all data type configurations before starting your migration project.



The *Email* Configuration screen is shown above. Each data type must be configured and enabled prior to beginning a migration. You can migrate one data type at a time or all data types together.

Below is a brief summary of the Interface. The item numbers on the above screen shot correspond to the item numbers listed below:

1. The *Top Level Menu* is where you set Migration Options, review log files, and configure batch migration data.
2. The *Buttons* represent each data type available for migration: E-mail, Address Book, Calendar, and Task/To Do. You can migrate one or more data types at a time. Each data type needs to be configured individually and enabled individually. A green checkmark will appear on the button when it is enabled for migration.
3. The *Source drop-down menu* displays a list of all the available messaging systems you can migrate from.
4. After the Source system is chosen, data entry text boxes will display. Fill out the information required for your source system.
5. The *Folders* button allows you to specifically choose or exclude individual email folders. By default, all folders will migrate. Therefore, you do not have to configure the source Folders list. This is optional.
6. The *Copy Configuration* button allows you to copy configuration information from the first screen into all other data type configuration screens. By default, Transend Migrator will fill in the information it can for you. Once you make changes, then this button allows you to update the other data type screens with those changes. Only similar or like-fields will be updated. When you use the *Copy Configuration* button, you must re-enable the other data types for migration.

7. The *Target drop-down* menu displays a list of all the available systems you can migrate into.
8. After the Target system is chosen, data entry text boxes will display. Fill out the information required for your target system.
9. Enable the migration after you have configured both the source and target system by checking the *Enable Migration* checkbox. Once a data type is enabled a green checkmark will appear on that section's button. Only the Enabled data types will migrate.
10. Select the *Start Batch Migration* button when you are ready to proceed with the migration.

## Section 3: Preparation of Source and Target Environments

---

Ensuring that you are properly prepared for migration is essential to a successful migration experience. Prior to performing any migration, we recommend you first review **Preparation Guides** that provide more detail about setting up your Source and Target environments.

### Preparing GroupWise for Migration

Normally, you will use a logon and password in order to connect to the GroupWise email server. If you are migrating multiple GroupWise accounts you may use Trusted or Proxy mode.

**Trusted Mode** allows you to perform migrations for users without having to know each user's password. You must have admin permission on the GroupWise server in order to use Trusted Mode. A user ID is still required, and you must be running GroupWise 6.5 or greater for this ability to be used.

**Proxy Mode** does not require admin permission. Instead, the alternate user account you will be migrating must give you proxy access to their data.

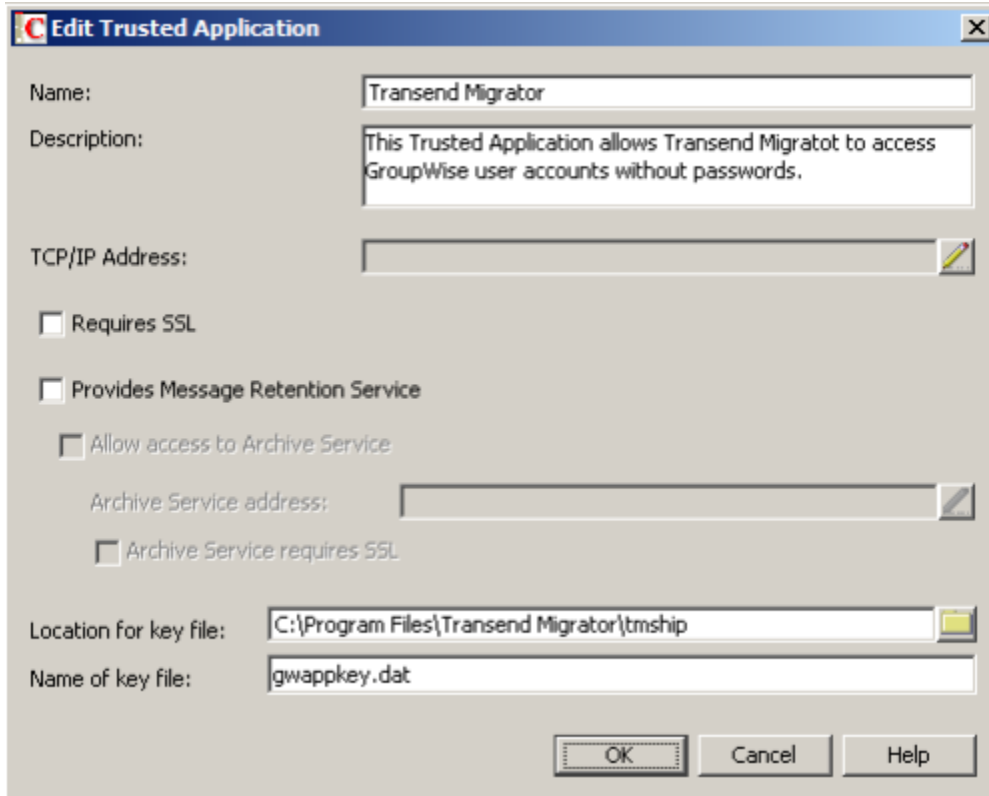
### Trusted Mode for GroupWise 2012

You can create a Trusted Application key in Novell ConsoleOne, and enable Transend Migrator to use this key so that it can access user accounts without the need for a password. The following steps outline how to create a Trusted Application Key using Novell ConsoleOne.

#### Note

Your workstation must have the Novell Client installed, and you must be logged in as an Admin having permission to run the trusted application.

1. Start Novell ConsoleOne
2. Select Tools from the menu
3. Select the GroupWise System Operations submenu
4. Choose the Trusted Applications program.
5. Press the Create button.



6. Enter the Trusted Application name. If you are running Transend Migrator on multiple workstations, create a different key with a different name for each workstation.
7. Enter the location for the key file.
8. Enter the name of the key file. For Transend Migrator to recognize the key, it must be named gwappkey.dat.
9. Press OK to create the key.

After the key file is created, it must be edited so that it is recognized by Transend Migrator.

1. Open the gwappkey.dat file with Notepad or a text editor. Notice, the unique key will be the only entry in the file.



2. Add the name of the Trusted Application to the first line. In the above example, the Trusted Application is called Transend Migrator.
3. Enter a carriage return / line feed after the unique key.
4. Save the modified gwappkey.dat file.

5. Copy the gwappkey.dat file into the same directory where Transend Migrator is installed. By default, this directory is C:\Program Files\Transend Migrator\tmship on 32bit Windows systems, or C:\Program Files (x86)\Transend Migrator\tmship for 64bit Windows systems.
6. At this point you can run Transend Migrator as a Trusted application; however, you must tell Transend Migrator that it is in Trusted mode by using the /trusted switch (when using the GroupWise Client) or the /gwtrusted switch when connecting to GroupWise using the IMAP protocol.

### Trusted Mode for GroupWise 6.5 through version 8

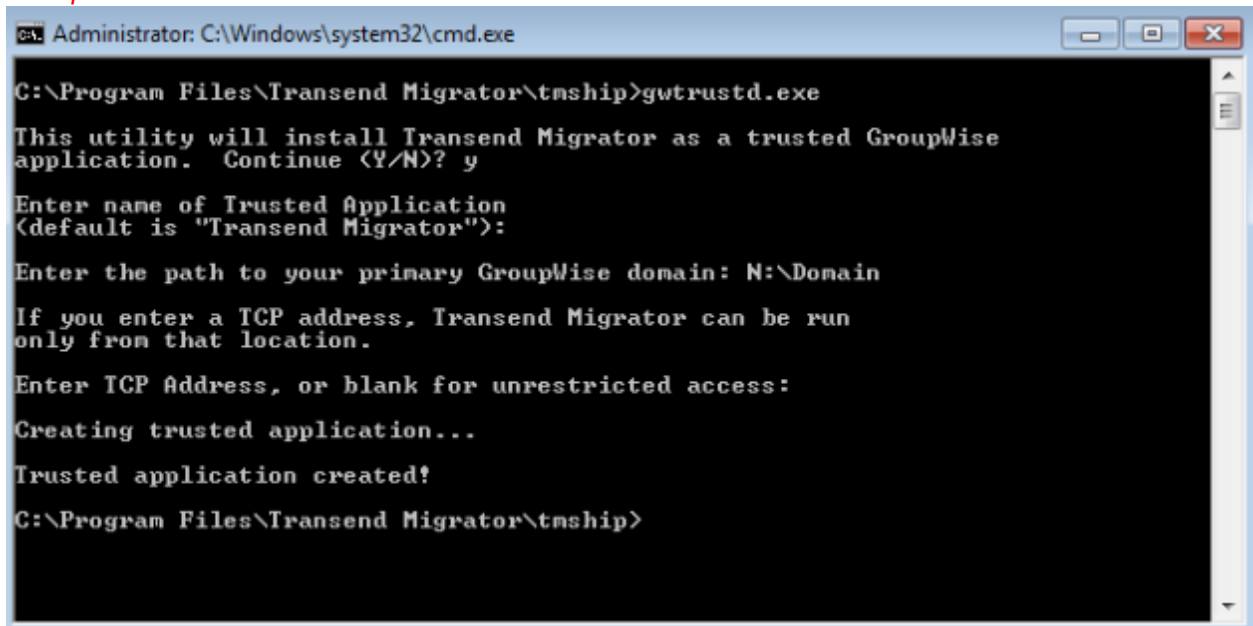
Perform the following steps to configure Transend Migrator as a Trusted application.

#### Note

This procedure requires Network Admin rights to the GroupWise email server, and the Trusted program must be run on a 32bit Windows system. Contact your Network Administrator if you need Trusted Access.

1. Download the Transend Trusted package from [www.transend.com](http://www.transend.com). This package contains two files, gwtrustd.exe and gwtapp.dll.
2. Place gwtrustd.exe in the same directory as Transend Migrator.
3. Place gwtapp.dll into C:\Windows\System32.
4. Log into the Novell Network as administrator.
5. Map a drive to the location of where the GroupWise domain and post office can be found. The Trusted application requires a mapped drive and it needs to know where the domain files are located.
6. Open a Command Prompt, and change directories so that the current directory is the Transend Migrator installation directory.
7. Run gwtrustd.exe. This utility will ask you for the path to the GroupWise domain directory. This is the directory in which you can find the files GWDOM.DC and GWPO.DC. The utility optionally allows you to enter an IP address.
8. Enter optional settings or hit enter to complete the Trusted installation.
9. When it completes successfully, the effect of running this utility is to set Transend Migrator as a Trusted application. It creates inside the Transend Migrator installation directory the file "gwappkey.dat", which contains the key information that Transend Migrator uses to enable Trusted mode.
10. At this point you can run Transend Migrator as a Trusted application; however, you must tell Transend Migrator that it is in Trusted mode by using the /trusted switch (when using the GroupWise Client) or the /gwtrusted switch when connecting to GroupWise using the IMAP protocol. See [GroupWise](#) Options for more details on the use of this switch.



**Example**

```
Administrator: C:\Windows\system32\cmd.exe

C:\Program Files\Transend Migrator\tnship>gwtrustd.exe

This utility will install Transend Migrator as a trusted GroupWise
application.  Continue (Y/N)? y

Enter name of Trusted Application
(default is "Transend Migrator"):
```

Enter the path to your primary GroupWise domain: N:\Domain

If you enter a TCP address, Transend Migrator can be run only from that location.

Enter TCP Address, or blank for unrestricted access:

Creating trusted application...

Trusted application created!

C:\Program Files\Transend Migrator\tnship>

**Proxy Mode**

Trusted Mode is the recommended method for converting user accounts using the Admin's credentials. If Trusted Mode is not available you can then use *Proxy Mode*. GroupWise has a feature allowing one user to open email for another user. This is called Proxy Access and more information can be found on Proxy Access in the GroupWise documentation. Proxy access allows User A to grant access rights to User B, so that User B may read or create email for User A.

If proxy access has been given to the Admin performing the email migration then the Admin account will be able to convert email for users without knowing their password. It is recommended that you use Trusted Mode (see above), but if you are using a version of GroupWise older than 6.5 then Trusted Access mode is not an option. In that case, use Proxy Access or provide the user password.

In Transend Migrator, to perform a proxy login, modify the syntax of the "GroupWise User" field. Instead of using a single User ID, enter "UserB for UserA", where UserB is the person who has been granted proxy rights, and "UserA" is the person who owns the mailbox. The password required will be that of UserB. In batch mode, this syntax is used for the "FromDatabase" field.

**Regular Access**

If you cannot use Trusted Mode or if Proxy Access is not an option then you need to provide the username and password for each GroupWise account.

## Preparing Exchange Server (2010, 2007) for Migration

Transend Migrator usually uses MAPI to connect to the Exchange (2010 or 2007) Server.

### *Important*

However, because of the potential MAPI conflicts that arise when migrating from GroupWise to Exchange, we recommend you use Exchange Web Services (EWS) when migrating email, address books, calendars, and tasks into Exchange 2010 or 2007.

### Setting Full Access Permissions

You can migrate user accounts without user passwords if your migration account has full access permission to the user accounts. You must give your migration full access permission and then enable the /AUTHEWSD <parameter> or /AUTHEWSI <parameter> custom switch options. The parameter value is the migration account and password authorized to access the user accounts.

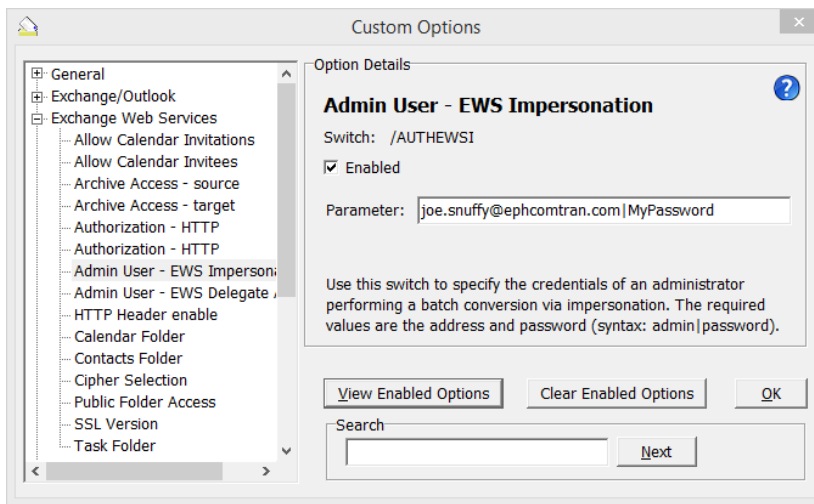
### Impersonation

The following example explains how to setup an impersonation account in Exchange Server so that you will be able to migrate user accounts without the need for user passwords. This is a basic example and you may need to adjust your system to allow Impersonation.

1. Sign into the Exchange Control Panel.
2. Click Permissions from the menu on the left hand side of the screen.
3. Click on Admin roles from the top menu.
4. Click on the New (+) Add a new Admin Role Group icon.
5. Give the role group a new name, such as Transend Migrator.
6. Assign the “ApplicationImpersonation” role.
7. Add the member who will receive this permission.
8. Save this new role group.

After enabling and assigning Impersonation to a user account, add the Impersonation account email address and password into the /AUTHEWSI <account|password> custom switch option in Transend Migrator.

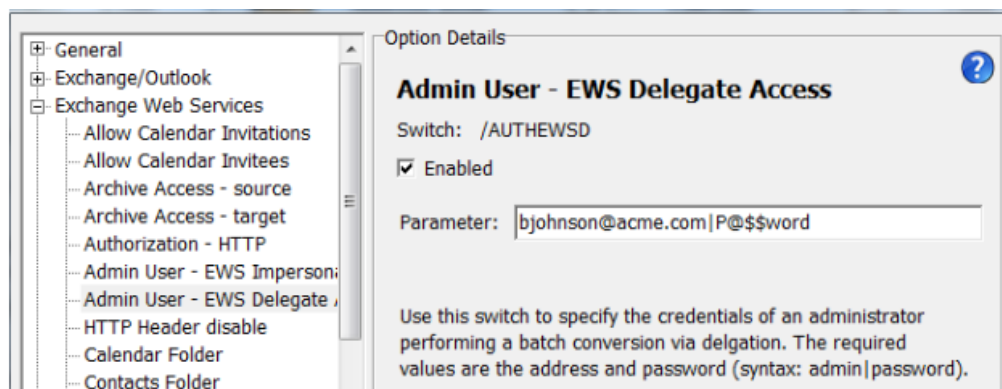
1. Start Transend Migrator.
2. Choose Migration Options from the menu.
3. Select Custom Options.
4. Expand the Exchange Web Services section.
5. Choose the Admin User – EWS Impersonation switch (/AUTHEWSI).
6. Enter the Impersonation account and password.



7. Enable the Migration.
8. Press the OK button to return back to the Transend Migrator desktop.
9. Now, you may enter the target server and account information, but the password is no longer required.

## Delegate Access

You may also use Delegate Access to migrate user accounts with the need for passwords. Once Delegation or Full Access Permission is assigned to your Migration Account, enable the /AUTHEWSD <parameter> custom option switch in Transend Migrator and enter the migration admin account logon and password for the parameter value.



**Note:** The following PowerShell command is a basic example on how this can be accomplished; however, your environment may need additional options.

### Example

```
get-mailbox -ResultSize Unlimited | foreach {Add-MailboxPermission -Identity $_.Identity -User admin@mycompany.onmicrosoft.com -AccessRights FullAccess -InheritanceType All}
```

## Section 4: Batch Migration Setup

Setting up a batch process is nearly as easy as setting up a migration for a single user account. All batch data is stored in a Transend Migrator Data (TMD) file which contains all of the settings and options you have configured in the user interface. Select *File / Save Configuration* under the main menu to save all the current configurations to the default.tmd or custom TMD file.

Before configuring and processing a batch migration, we recommend you first test the conversion of one user mailbox to become familiar with how Transend Migrator is designed.

### Assigning Batch Variables

Once you have configured and tested a single user mailbox migration, you are now ready to turn your project into a batch migration by assigning variables to values that can change (usually the mail database or source user name, password, and target accounts). You assign these variables to values by populating the *Batch Mode Data* table.

The *Batch Mode Data* table is located at *Batch Migration / Batch Migration Setup* from the main menu. To perform a batch migration, the *Batch Mode Data* table needs to be populated with all the users account information required for the migration. You provide this information by entering it into each row and column cell, or by importing a comma delimited text file you have already created. The information required will vary depending on the email system you use.

Transend Migrator - Migration Options

Folder Convert List | Folder Exclude List | Folder Mapping | Address Translation | **Batch Mode Data** | OK | Help

Batch Mode Data

Migrated	\$Var1	\$Var2	\$Var3	\$Var4	\$Var5	\$Var6	\$Var7	\$Var8
<input type="checkbox"/>	jsmith	John Smith	truck	john.smith				
<input type="checkbox"/>	jsnuffy	Joe Snuffy	army1	joe.snuffy				
<input type="checkbox"/>	bjohnson	Beverly Johnson	yakima	beverly.johnson				
<input type="checkbox"/>	jjones	Jennifer Jones	horses	jennifer.jones				
<input type="checkbox"/>								
<input type="checkbox"/>								
<input type="checkbox"/>								
<input type="checkbox"/>								
<input type="checkbox"/>								
<input type="checkbox"/>								
<input type="checkbox"/>								
<input type="checkbox"/>								
<input type="checkbox"/>								
<input type="checkbox"/>								

Current Line: 4 | Load From File... | Load Column From Directory... | Clear Data

Notice in the above example, each column is associated with a variable, and those variables are **\$var1** through **\$var8**. The user data is populated into the table, and one row represents one user's data, and those are the values for the variables. Once all the data is entered, select the **OK** button to return back

to the main interface and the data type you are working on (E-Mail, Address Book, Calendar or Task/To Do). Next, substitute the user account information with the variables found on each column header.

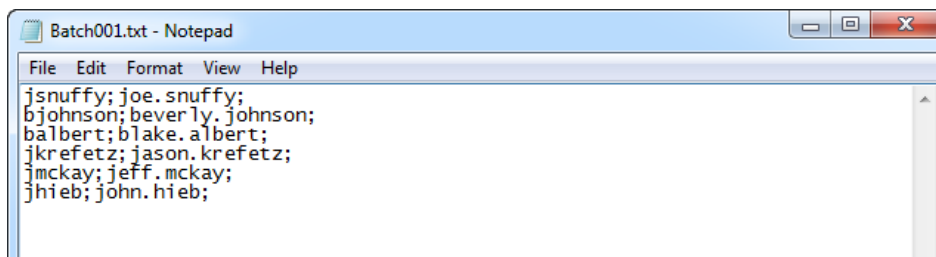
### Note

The checkboxes are in read-only mode; however, you may right-click on the checkbox and select the appropriate option. You may also move your cursor to the checkbox field and press the space bar to set or clear the checkbox.

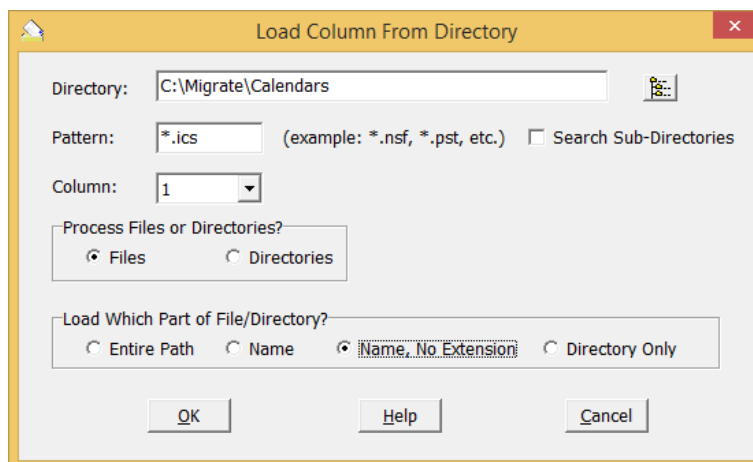
## Loading User Mailbox Account Data

**Load From File:** The *Load From File* button allows you to load a text file, which is a comma separated value file, of the values you want to fill into the variables columns. In your migration, collect user data into a database or spreadsheet and then organize the user data by columns and rows. Extract the data into multiple comma separated value files (CSV) and import those CSV files by batches.

The following CSV file uses the semi-colon as a delimiter instead of the comma. This is useful to use when a value has a comma, and when the comma cannot be used.



**Load From Directory:** The *Load Column From Directory* button allows you to load file or directory information into the column of your choice. This feature is helpful when you have migrations based upon files or directories rather than from direct connections, such as with Exchange/Outlook, Lotus Notes, and Novell GroupWise.



Compare the following two screenshots to see how the variables can be used. The first screen shot shows how a single email conversion can be setup. The second screenshot shows how variables can be inserted into the configuration screen to turn a single migration into a batch migration.

### Single User Migration

The screenshot shows the Transend Migrator application window with the 'E-Mail Configuration' tab selected. The 'Source' section is configured for a single user migration from GroupWise (via GW API) to Exchange (EWS). The 'Target' section is also configured for EWS. The 'Enable Migration' checkbox is checked. The 'Start Single Migration...' button is visible at the bottom.

**Source:**

- From: GroupWise (via GW API)
- GroupWise User: peyton.manning
- Password: MyPassword
- ☐ Use Archive (GW client 5.5 or greater)
- Folders... (All folders selected by default)

**Target:**

- To: EWS
- Server Name: server.domain.com or IP Address
- User Email: peyton.manning@broncos.com
- Password: MyPassword
- Test Logon

Buttons: Start Single Migration..., Start Batch Migration...

Licensed To: Peyton Manning/Broncos for 500 users

### Batch Migration (with Variables)

The screenshot shows the Transend Migrator application window with the 'E-Mail Configuration' tab selected. The 'Source' section is configured for a batch migration from GroupWise (via GW API) to Exchange (EWS). The 'Target' section is also configured for EWS. The 'Enable Migration' checkbox is checked. The 'Start Batch Migration...' button is visible at the bottom.

**Source:**

- From: GroupWise (via GW API)
- GroupWise User: \$var1
- Password: admin pw
- ☐ Use Archive (GW client 5.5 or greater)
- Folders... (All folders selected by default)

**Target:**

- To: EWS
- Server Name: server.domain.com or IP Address
- User Email: \$var1@broncos.com
- Password: admin pw
- Test Logon

Buttons: Start Single Migration..., Start Batch Migration...

Licensed To: Peyton Manning/Broncos for 500 users

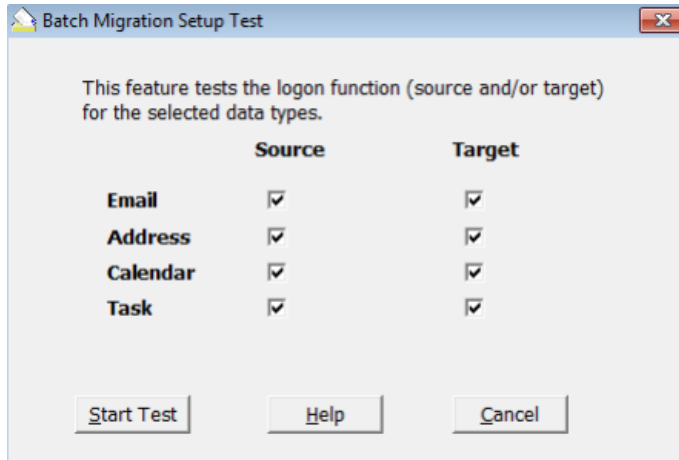
The objective is to look for user data that will remain constant, and user data that needs to change.

Review your data as it is entered in the *Batch Mode Data* table, and then substitute what needs to change with the appropriate variable (e.g. \$var1, \$var2, etc.).

## Validate Batch Setup

Use this feature to test your batch settings before beginning your batch migration. This feature will test the logon for each section you specify, and for each user listed in the Batch Mode Data table.

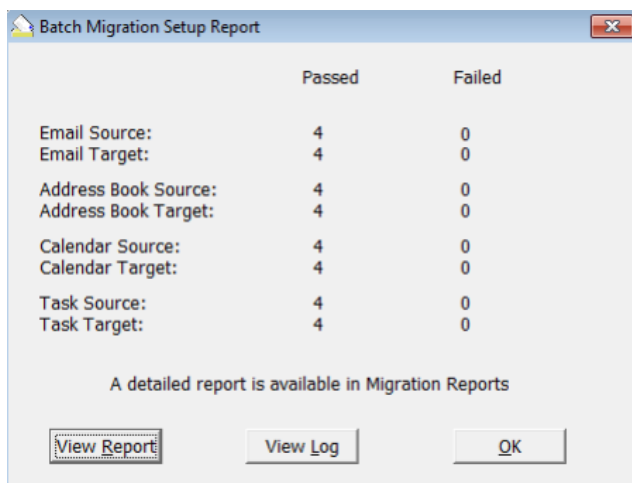
### Batch Migration Setup Test



1. Select the source and target types you want to test the logon for.
2. Press the Start button.
3. Review your results.

### Batch Migration Setup Report

Review the Batch Migration Setup Report results. If there are any connection failures, press the View Log button to review the log file generated during the test.



1. Press the View Report button to view the test results. The report is created in XML format, and viewable with Microsoft Excel. It will list each section tested (email, address book, calendar, and task), and it will report the success or failure of the source and target connection test.

2. Press the View Log button to view the master log file generated during the test. The log file is the master log file, and it will show the results of your validation test. Review this log file if you have a connection test failure, and look at the end of the log file for your latest test. Failures are recorded in the color red.

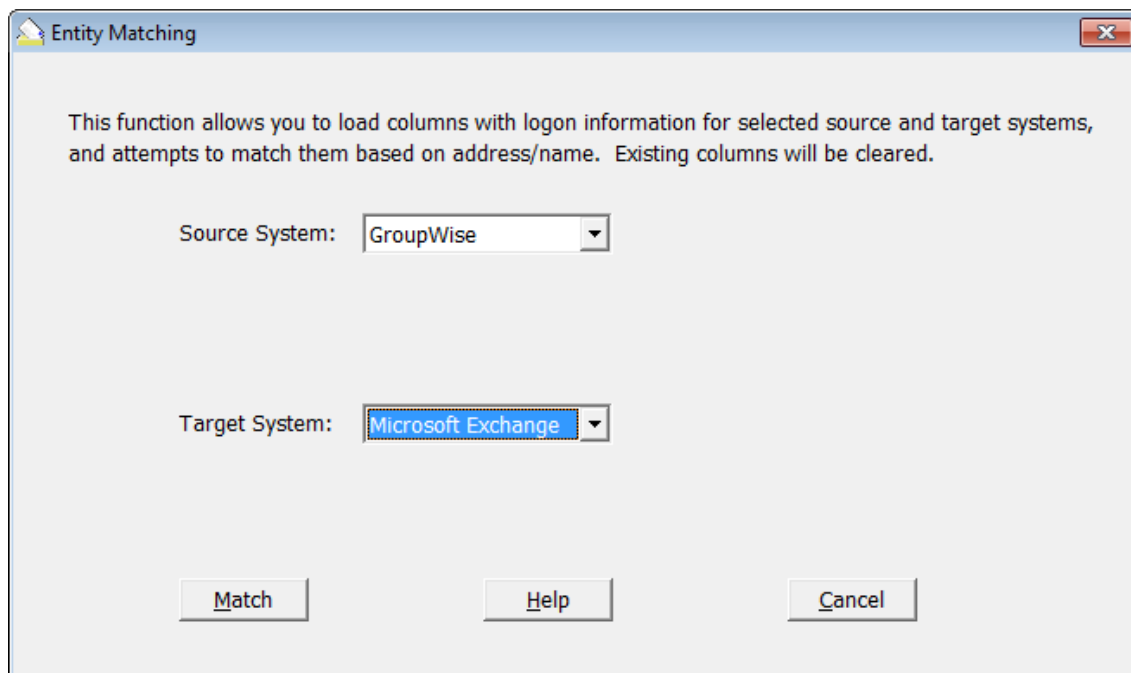
## Entity Matching

Entity Matching is a feature whereby Transend Migrator will load lists of users from selected source and target systems, and attempt to match source users to target users. The results are then imported into the Batch Mode Data screen for use in automating a batch migration. The match is done based primarily on the email address, and secondarily on the display name. Only the prefix of the email address is used (the part before the '@' character).

Once a match is made, the data imported into the data table consists of whatever is needed to connect to the systems in question. It may be necessary to add additional data (via batch mode substitution). For example, when importing users from Active Directory (Microsoft Exchange), Transend Migrator will retrieve the short user name, e.g. "jsmith". In the "Profile or PST" field of the E-mail Configuration screen, you would enter "servername!!\$var1" (or \$var2).

For some systems, Transend Migrator will require you to supply the name of an address list extract file, or a global directory file. Those cases are discussed in the sections below.

1. Select *Batch Mode Setup* from the Batch Migration menu.
2. Press the *Entity Match* button.
3. Choose your source and target system for entity matching.





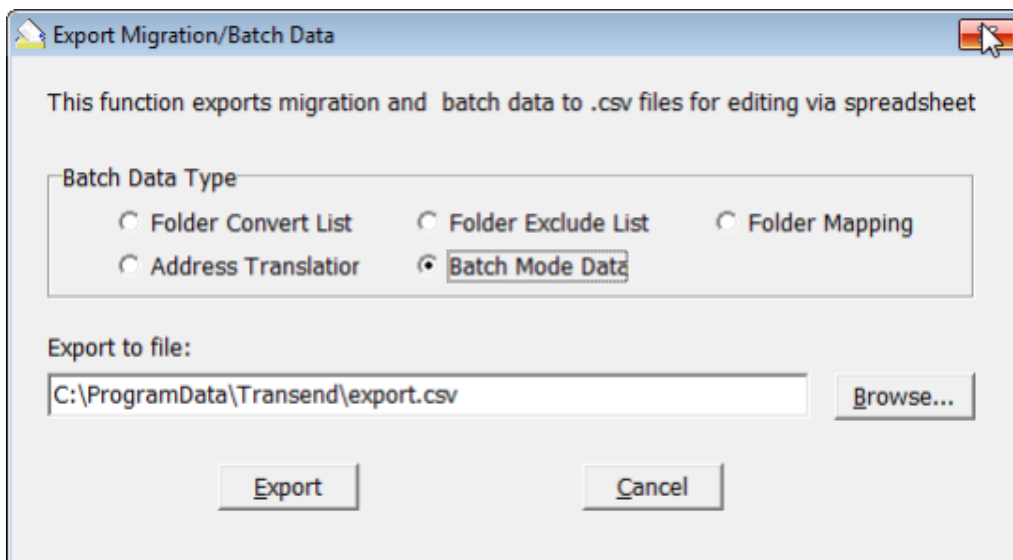
**Novell GroupWise****Requirement**

You must be running Transend Migrator on a workstation that has the GroupWise client installed. Transend Migrator will attempt to log on to the default account for that workstation. You may be prompted to supply the password for that account.

**Recommendation**

Once Transend Migrator matches accounts, edit the information in the Batch Mode data table. If you have a large batch list, it will be easier to edit the information in Excel. Therefore, use the Export Batch Data feature of Transend Migrator to create a CSV file to edit in Excel.

1. Perform an Entity Match
2. Choose the Batch Migration menu item.
3. Select Export Batch Data from the menu.



4. Choose the Batch Mode Data option.
5. Enter a path and file name to export the information into.
6. Press the Export button.
7. Import the file into Excel, or edit it with a text editor.

### Microsoft Exchange

You must be running Transend Migrator in an account that has read access to Active Directory. Transend Migrator will connect directly to retrieve user data, and no extract file is used.

Once you have selected your systems and supplied the necessary information, press the "Match" button. Assuming there are no issues with data access, Transend Migrator will display the number of users found for each system, and the number of matches that were made. At this point, you will have the option of importing the results into the data table. All users in the source system will be imported, whether or not there was a match found for each user. In the case where no match was made, the corresponding row in column \$var2 will be blank. These entries will need to be updated or deleted.

#### Note

The original data (if any) in the data table can be recovered, if you don't like the results, by exiting Transend Migrator without saving the configuration file. If you don't want to perform matching, but want to retrieve a user list from one of the supported systems, you can leave the target system as "Please Select", in which case, only column \$var1 is populated.

### Migrated Checkboxes

The first column in each row has a checkbox that tracks which accounts have been successfully migrated thus far. If the box is checked it means that user successfully migrated. You can then restart your migration and only migrate users who do not have a checkmark in the *Migrated* column.

After a migration is run, all users who were successfully migrated will have their *Migrated* checkbox checked. This checkbox information is stored along with the other migration data within the TMD file. Therefore, it is very important to save the TMD file before and after a migration. When you exit Transend Migrator after a migration you will receive a warning if you have updated checkboxes and are attempting to exit without saving.

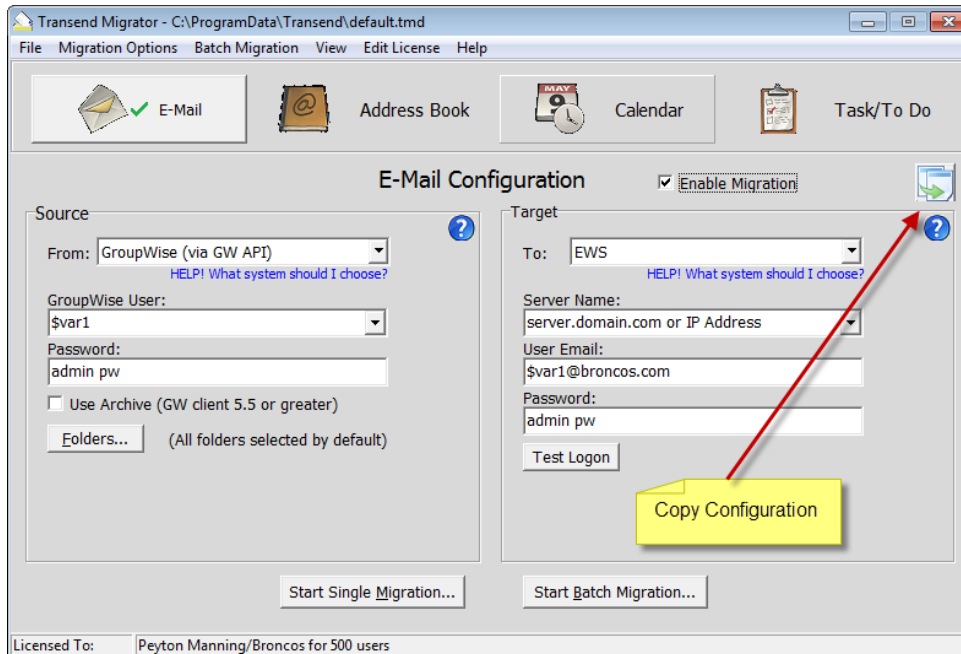
When you run the same migration again by pressing the *Start Batch Migration* button, Transend Migrator will give you the option of converting just the unchecked entries, or to convert them all.

### Enable Migration

When you are finished inserting the different variables in the appropriate locations, enable the migration by checking the *Enable Migration* Checkbox. Notice, the green checkmark will appear on the appropriate tab after fully configuring and enabling a migration section.

## Copy Configuration

If your migration will include Address Books, Calendars, or Task/To Do items, and those data types will use the same account information as *Email*, select the *Copy Configuration* button to copy your changes to the other data type sections. The *Copy Configuration* button is located to the right of the *Enable Migration* checkbox.

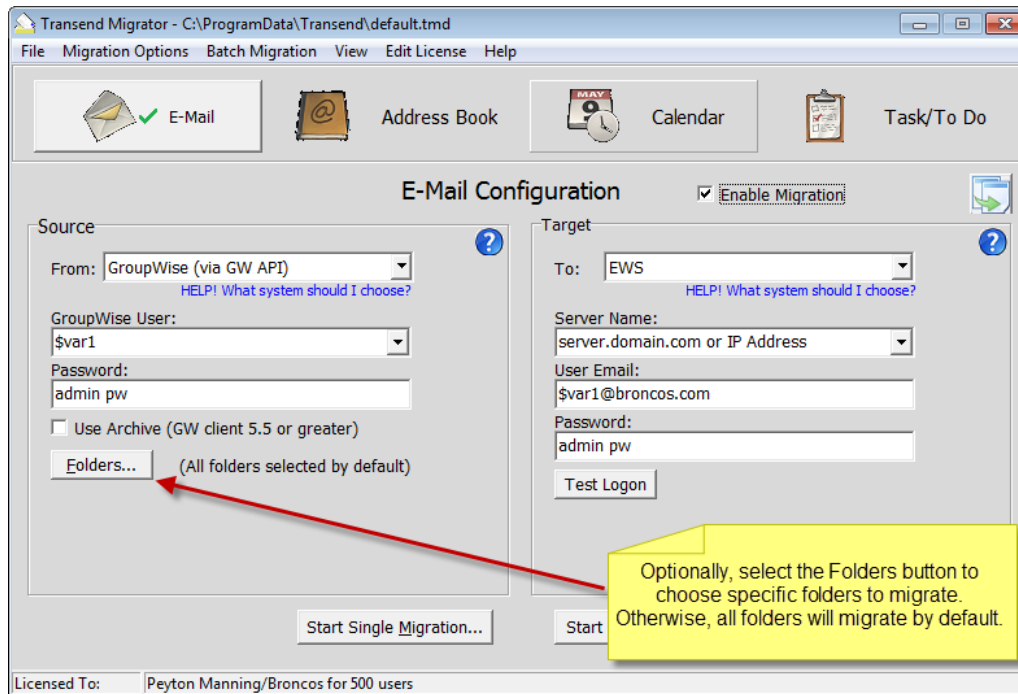


### Helpful Hint

It is possible you will want to migrate data that is in a different format as the email system data you are migrating. For example, you could be migrating email from an IMAP system, but your Address Books are LDIF files and your Calendar items are VCS files. Transend Migrator is very flexible and configurable to your unique environment. However, in this situation you would NOT want to use the *Copy Configuration* button.

## Section 5: Folders

By default, all available folders will migrate during email conversion. You can change this behavior by selecting the specific folders you want to migrate or selecting specific folders you want to exclude.



### Folder Convert List

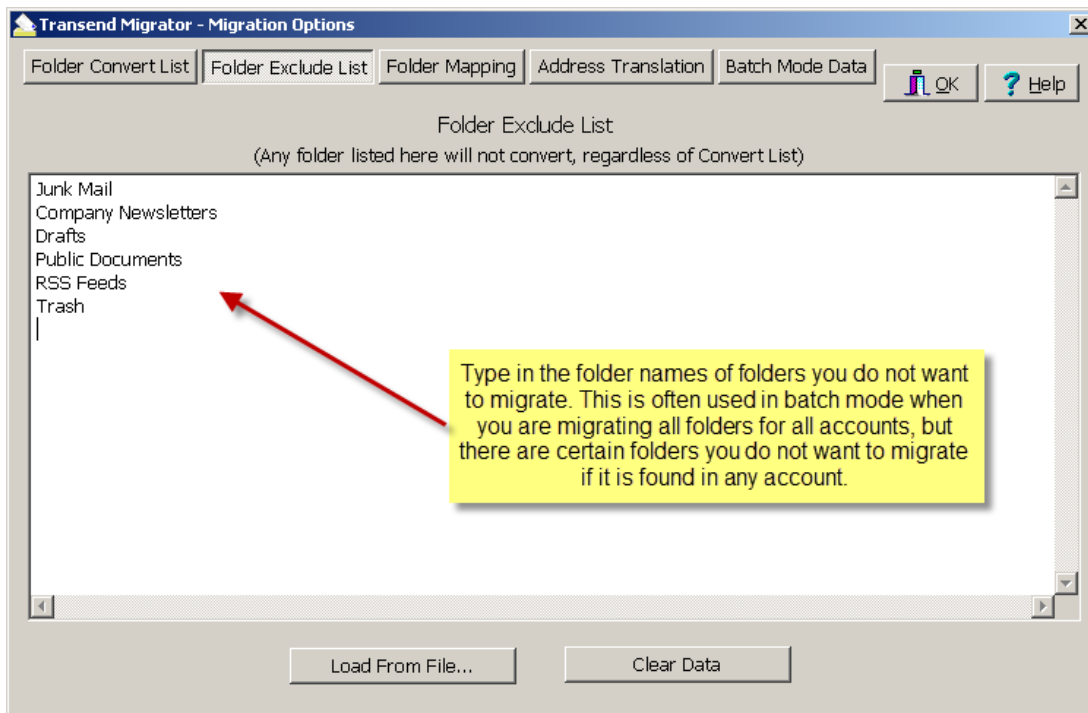
The *Folder Convert List* is blank by default. When the list is blank this means that all folders available in the source account will be migrated. You may want to press the *Load from E-Mail Source* button to review the available folders so that you can manually choose which folders to migrate. Remove a checkmark if you do not want that folder to migrate.

You may also want to load the list of folders into the *Folder Convert List* so that you can create a list of folders you do not want to migrate. For example, maybe you do not want to migrate the Junk Mail folder for this one account, or for all accounts. Right click on the folder you do not want to migrate, add it to the *Folder Exclude List*, and then press the *Clear Data* button to remove all entries from the *Folder Convert List*. When the *Folder Convert List* is empty, this tells Transend Migrator to convert all folders except what is listed in the *Folder Exclude List*.

### Folder Exclude List

You may want to exclude certain folders from being migrated. Select a specific folder you wish to exclude, right-click, and then choose the *To Exclude List* option to copy the folder name to the Exclude List. This is commonly used in Batch Mode so that a specific folder will be excluded for all accounts. This

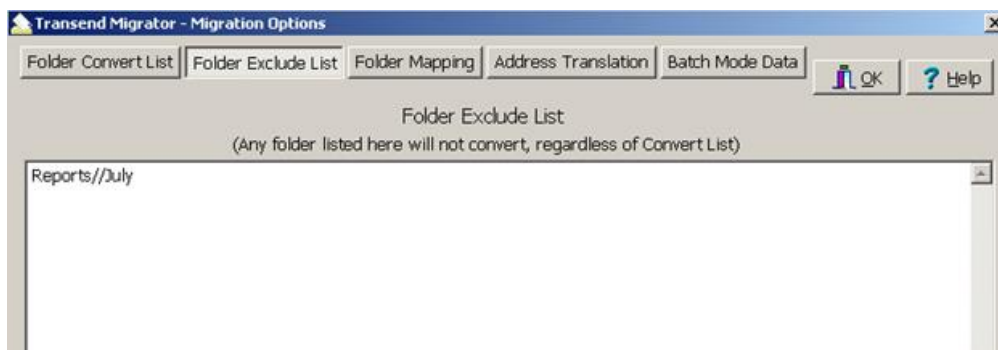
is helpful for when you want to migrate all available folders except for a select list. After adding folders to the *Folder Exclude List*, remember to clear the list of folders in the *Folder Convert List*.



1. Enter the names of the folders you wish to exclude.
2. Optionally, if you have a text file containing folder names to exclude you may load that list by pressing the Load From File button.
3. Right Click in this window for other options on these entries. These Unicode features are helpful when migrating non-English character sets.

#### Additional Information

If you manually specify a folder in the Folder Exclude List and if this folder has a slash character in it (besides the hierarchy delimiter) you need to enter two slashes. If the actual folder is "Reports/July" enter it as "Reports//July".

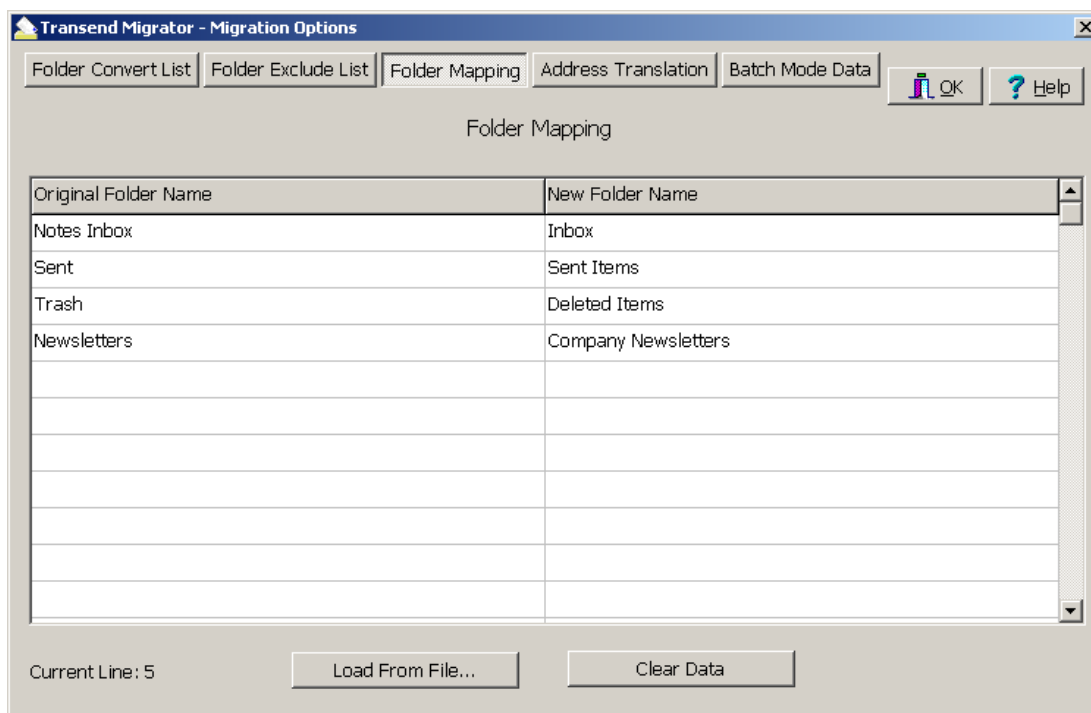


## Folder Mapping

Folder Mapping allows you to migrate a folder with a certain name into another folder of a different name. In many email systems, folders have similar functions yet they have different names. For example, new messages received into Lotus Notes are placed inside the *Notes Inbox* folder. In Microsoft Exchange, new messages received are placed inside the *Inbox* folder. If you want the *Notes Inbox* items migrated from the Lotus *Notes Inbox* into the Microsoft Exchange *Inbox* then create a *Folder Map*.

You may also map a folder into a new folder on the target email system. Enter the new name into the New Folder Name field and messages specified within the Original Folder Name field will migrate into that folder.

Enter the folder names by putting your cursor into the text box and then begin typing. Press the *Tab* key to get to the next textbox on the list. Press *Shift-Tab* to go to the previous textbox on the list.



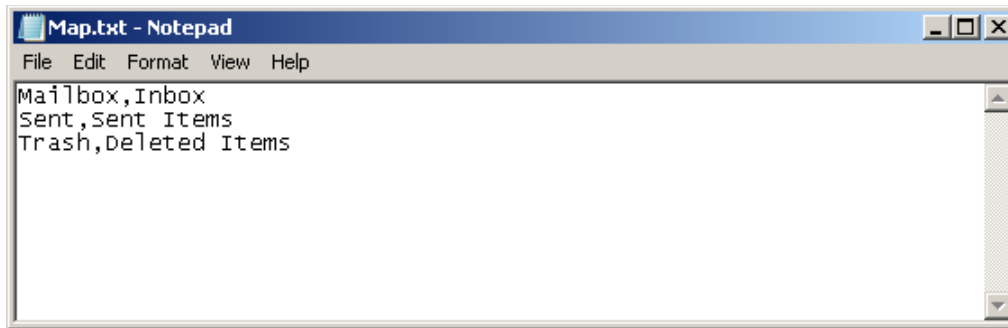
### Suggestion

An easy way to load the Original Folder Name is to load the folder list on the Folder Convert List tab, right click on the folder to be mapped, and then choose the Add to Folder Map menu option. This feature will copy the folder name into the Original Folder Name textbox on the Folder Mapping tab. Since the folder names must be exact, adding the Original Folder Name from the Folder Convert List will ensure it is entered in correctly.

### Load From File

You may also create a comma separated value (CSV) file containing a list of Original Folder Names and the New Folder Name. Save this file as a text file. Load the text file into the Folder Mapping table and the entries will fill into the Original Folder Name and New Folder Name fields.

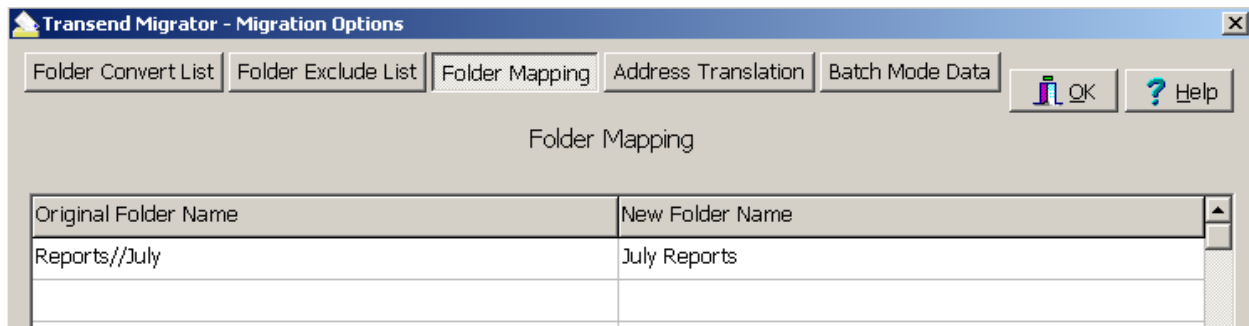
### Example Map File



The CSV file is a text file with these two values. Each line contains the exact name of the Original and Target folder name separated by a comma.

### Additional Information

If you need to map a folder that has a slash character in it (besides the hierarchy delimiter) you need to enter two slashes. If the actual folder is "Reports/July" to specify it you would enter it "Reports//July".



### Note

If you do not want to map any folders but want to place all folders into a *Group Folder*, use the Group Folder switch found in *Migration Options / Custom Options*. The switch is /GN <value> where value is the name of the group folder.

## Section 6: Address Translation

Transend Migrator supports address translation through the *Address Translation Table*. You can access the *Translation Table* under *Batch Migration | Batch Migration Setup | Address Translation* from the main menu.

The *Translation Table* allows you to create Internet Style addresses based upon the criteria you provide. The Translation Table is helpful to use if you are changing the email address of your users and if you want Transend Migrator to make those changes during the migration. It is also helpful to use when migrating distribution lists and calendar attendees.

Transend Migrator expects to find a match within the *Address Translation Table*. Changes will only be made to matches found.

The *Address Translation Table* is divided into two sections. The first section is the *Old Address* format, and the second section is the *New Address format* you want it to be. The Old Address section of the Address Translation Table must be in the exact format the source application stores it.

### Translation Table Example

Enter the Address Translation Table data into the fields provided on the *Address Translation* tab. You may also import your csv text file containing address translation data into the Address Translation interface.

Old Address	New Address
Joe Snuffy	joe.snuffy@comaxis.com
Beverly Johnson	beverly.johnson@comaxis.com
Blake Albert	blake.albert@comaxis.com

For more detail about *Address Translation* refer to the Transend Migrator help file.



## Section 7: Migrating Messages/Folders (Step-by-step)

---

The following is a step-by-step guide of how to migrate *E-Mail* from GroupWise (via GW API) to Exchange/Outlook (EWS):

1. Select the Email Button to configure the email choices.
2. Select *GroupWise (via GW API)* from the *From* drop down selection box on the Source Pane on the left side of the screen.
3. Enter the User Name and Password (if necessary).
4. Select the *Folders* button to choose which folders to migrate. All folders will migrate by default.
5. Select *EWS* from the *To* drop down selection box in the *Target* pane on the right side of the screen.
6. Enter the Server Name, User Email Address and Password (if necessary).
7. Insert the different *batch variables* in the appropriate source and target locations, as described above.
8. Place a checkmark in the *Enable Migration* Checkbox to enable Email for migration. Notice, the green checkmark appears on the *Email* button after you check the *Enable Migration* checkbox.
9. Optionally, configure and enable the other migration choices if they are to be included with this batch migration.
10. Select the *Start Batch Migration* button to complete the migration. The *Migration Monitor* will start and display the real-time migration progress.
11. Once complete, select the *OK* button to go back to the main screen.

### GroupWise Considerations

There are two primary methods you can use when migrating email from GroupWise. The first method is via the GroupWise Object API, which requires the GroupWise email client be installed. It contains a set of Dynamic Link Libraries (DLL), or application files that are included with the Novell GroupWise Client software.

The second method is via the IMAP4 protocol. Rather than migrating from or to GroupWise using the GroupWise API, enable IMAP4 support and migrate from or to GroupWise using the *GroupWise (via IMAP)* choice. This choice is often more reliable and faster than using the GroupWise API method, and is the preferred choice when migrating only email between GroupWise and Microsoft Exchange/Outlook (2003, 2007, 2010) via MAPI.

**Requirements.** The GroupWise client software is required when using the GroupWise API, and it is also required if you are migrating GroupWise archives. For live email, the IMAP4 protocol must be enabled on the GroupWise server if using the IMAP4 method. Lastly, an active or live GroupWise email account must exist. The logon and password is required. Optionally, you can migrate another account if you have proxy access to that account or by using Trusted Mode.

### Important Information

Ensure you are running a stable release of GroupWise, and use the recommended patches or updates required by Novell. If you are running GroupWise versions 6 then patch to version 6.5.7. If you are

running version 7 then patch to 7.0.3 or greater. Similarly, if you are running GroupWise version 8 then patch to version 8.0.1 or greater.

**GroupWise 5.x.** If you are migrating from GroupWise 5.x and if you are using the GroupWise API method, then you may need to use the **/GW5** switch option so that you can connect to it. This is an undocumented switch so enter this switch into the Undocumented Options section of Transend Migrator, which is found in Migration Options | Custom Options | Other | Undocumented Switches.

#### Warning

When migrating messages using the GroupWise API method, migrate a test account before migrating a live account. For some reason, some older versions of GroupWise will change the date of the source messages to the current date and time. This rarely happens, but if it does happen the message date issue is irreversible, and we recommend migrating live messages using the IMAP4 protocol instead.

**Data File.** The GroupWise data is stored within a GroupWise email server. Therefore, the GroupWise server must be running. Because GroupWise email data is located on a live GroupWise server there aren't any source files; however, GroupWise archives can be stored on a local workstation or on a network share. Transend Migrator can convert from the archives. The GroupWise API is required in order to migrate GroupWise archives unless the archives are un-archived back into the live account. In that case, you will also be able to migrate via the IMAP4 protocol.

#### How to avoid MAPI Conflicts

If you are migrating email between GroupWise and Microsoft Outlook/PST, and cannot use EWS to connect to the target system, the recommended email migration method is *GroupWise (via IMAP)*. This is because GroupWise and Outlook both use a program file called MAPI32.DLL, and both email programs use their own versions. Because of this, you may not be able to convert email directly between GroupWise and Outlook. Therefore, we recommend you use the IMAP4 Migration choices when it is possible. Review IMAP4 for more information.

If the IMAP4 protocol is not available, and if you are getting connection problems between GroupWise and Outlook, then consider performing a 2-step migration. A 2-step migration means that you convert to a mail format other than GroupWise or Outlook and then convert from that format type to your destination application. For example, you may want to convert GroupWise messages into the **Transend Transport File**, and then convert the Transport File into Microsoft Outlook/Exchange.

#### Exchange/Outlook (2010, 2007) Considerations

Microsoft Outlook must be the default email program for Windows when converting from or to Microsoft Exchange/Outlook.

**Data File.** Microsoft Outlook stores email data within PST files. The PST file is also considered an email archive file. In a typical Exchange/Outlook environment the client workstation will not have PST files unless messages are archived to the local workstation. IF there are archived messages within Outlook, the messages are stored within an Outlook Personal Folder File.

The two main differences between a stand-alone version of Microsoft Outlook and a Microsoft Exchange Server based version of Outlook is where the email and data is stored. This is primarily determined and setup by the Microsoft Outlook email profile which can be found in the Windows Control Panel.

In an Outlook Stand-alone version, the email data is stored inside a *Personal Folder* message store or file. This file is commonly called a PST file. This message store can have any valid name, and it has a .PST file extension. Normally, this file is located on the workstation hard drive, but can be placed onto the network.

In an Outlook and Exchange Server environment, Outlook connects to the Exchange Server and the message data is stored on the Exchange Server. When a person logs into the Exchange Server, they normally go through a profile which contains the important logon name information. Optionally, a user can store or archive email to their local hard drive. This means that they can store email inside a PST file in addition to having email stored onto Microsoft Exchange.

## Section 8: Migrating Address Books (Step-by-step)

---

Transend Migrator can read address information directly from a GroupWise 5.5+ address book. You must be running Transend Migrator on a PC that has the GroupWise client installed. (Note: 5.5 or greater is required). If you have an earlier version of GroupWise, please use the Novell NAB format instead.

If there are connection problems when migrating from or to a Novell GroupWise address book, verify the account connection by opening the GroupWise account with the GroupWise client software. Then, open up the address books and note the name of the personal address book. Some versions of GroupWise name the address book "Personal Address Book" while some installations name the address book with the username. When migrating from GroupWise address books, use the asterisk \* to tell Transend Migrator to migrate all personal address books.

- **Requires.** The GroupWise client software is required and a live connection to a GroupWise server is required. Ensure you are running a stable release of GroupWise, and use the recommended patches or updates required by Novell. If you are running GroupWise versions 6 then patch to version 6.5.7. If you are running version 7 then patch your version to 7.0.3 or greater. Similarly, if you are running GroupWise version 8 then patch to version 8.0.1 or greater.
- **Data File.** The GroupWise address books are located inside the GroupWise account. A MAPI connection is required. Address books must be specified by name, or an asterisk can be specified to migrate all user address books to a different system.

The following is a step-by-step guide of how to migrate *Address Books* from GroupWise to Exchange/Outlook (EWS):

1. Select the *Address Book* Button to configure the Address Book choices.
2. Select *GroupWise* from the *From* drop down selection box on the *Source* pane on the left side of the screen.
3. Enter the address book name. **Use an asterisk \* to migrate all address books.**
4. Enter the GroupWise user name and password (if necessary).

5. Select *EWS* from the *To* drop down selection box in the *Target* pane on the right side of the screen.
6. Enter the required information for the target application.
7. Insert the different *batch variables* in the appropriate source and target locations.
8. Place a checkmark in the *Enable Migration* Checkbox to enable Address Books for migration. Notice, the green checkmark appears on the *Address Book* button after you check the *Enable Migration* checkbox.
9. Optionally, configure and enable the other migration choices if they are to be included with this batch migration.
10. Select the *Start Batch Migration* button to complete the migration. The *Migration Monitor* will start and show you the migration progress.
11. Once complete, select the *OK* button to go back to the main screen.

## Section 9: Migrating Calendar Entries (Step-by-step)

---

**Requires.** The GroupWise client software is required and a live connection to a GroupWise server is required. Ensure you are running a stable release of GroupWise, and use the recommended patches or updates required by Novell. If you are running GroupWise versions 6 then patch to version 6.5.7. If you are running version 7 then patch your version to 7.0.3 or greater. Similarly, if you are running GroupWise version 8 then patch to version 8.0.1 or greater.

**Data File.** The GroupWise calendars are located inside the active GroupWise account. Transend Migrator uses MAPI to connect to GroupWise. Therefore, no local files are involved with the migration. You will need the logon credentials for the GroupWise user being migrated.

The following is a step-by-step guide of how to migrate *Calendar* Entries from GroupWise to Exchange/Outlook (EWS):

1. Select the *Calendar* button to configure the calendar choices.
2. Select *GroupWise* from the *From* drop down selection box on the *Source* pane on the left side of the screen.
3. Enter the User Name and Password (if necessary).
4. Select *EWS* from the *To* drop down selection box in the *Target* pane on the right side of the screen.
5. Enter the required information for the target application.
6. Type in the alternate target calendar folder name if this is an option on your screen. Leave this entry blank to accept the default calendar.
7. Insert the different *batch variables* in the appropriate source and target locations.
8. Once the required information is entered check the *Enable Migration* checkbox. Notice, the green checkmark appears on the *Calendar* button after you check the *Enable Migration* checkbox.
9. Optionally, configure and enable the other migration choices if they are to be included with this batch migration.
10. Select the *Start Batch Migration* button to complete the migration. The *Migration Monitor* will start and show you the migration progress.
11. Once complete, select the *OK* button to go back to the main screen.

## Section 10: Migrating Tasks & To-do Items (Step-by-Step)

---

**Requires.** The GroupWise client software is required and a live connection to a GroupWise server is required. Ensure you are running a stable release of GroupWise, and use the recommended patches or updates required by Novell. If you are running GroupWise versions 6 then patch to version 6.5.7. If you are running version 7 then patch your version to 7.0.3 or greater. Similarly, if you are running GroupWise version 8 then patch to version 8.0.1 or greater.

**Data File.** The GroupWise Tasks are located inside the active GroupWise account. Transend Migrator uses MAPI to connect to GroupWise. Therefore, no local files are involved with the migration. You will need the logon credentials for the GroupWise user being migrated.

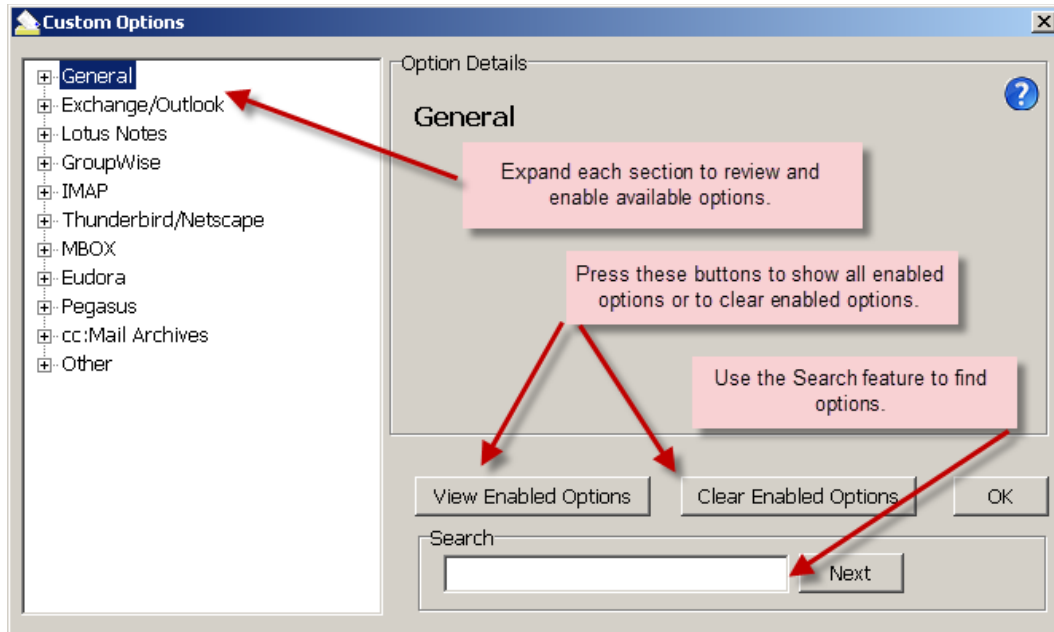
The following is a step-by-step guide of how to migrate *Task/To Do* Items from GroupWise to Exchange/Outlook (EWS):

1. Select the *Task/To Do* button to configure the task choices.
2. Select *GroupWise* from the *From* drop down selection box in the *Source* pane located on the left side of the screen, and then enter the required information for your task application.
3. Choose *EWS* from the *To* drop down selection box in the *Target* pane located on the right side of the screen, and then enter the required information for your target task application.
4. Type in the alternate target task folder name if this is an option on your screen. Leave this entry blank to accept the default task folder.
5. Insert the different *batch variables* in the appropriate source and target locations, as described in Section 4 above.
6. Once the required information is entered check the *Enable Migration* checkbox. Notice, the green checkmark appears on the *Task/To Do* button after you check the *Enable Migration* checkbox.
7. Select the *Start Batch Migration* button to begin the task migration. The *Migration Monitor* will start and show you the migration progress.
8. Once complete, select the *OK* button to go back to the main screen.

## Section 11: Custom Options

Custom Options are additional settings that allow you to alter the default behavior of Transend Migrator. There are hundreds of custom options to choose from. You do not have to enable custom options, but you can use these options if you want to alter the default settings. All Custom Options are detailed in the **Help File**.

Select *Migration Options / Custom Options* from the main menu in order to configure available options.



### Search Information

If you want to enable an option but do not know where to find it, enter a keyword inside the search text box to search for the option. Transend Migrator will search for that keyword inside the entire Custom Options section and display how many times it was found.

Select the *Next* button to review all the sections where your keyword was found. Enable the correct option. You may also search by a specific option switch (e.g. /D140). Sometimes an option can be found in two or more locations. Review the correct location for the option and then enable it in the source or target section related to your specific project.

Review enabled Options by selecting the *View Enabled Options* button on the *Custom Options* screen or by selecting *Enabled Migration Options* from the View menu. These choices will display all enabled options by category.

## Commonly Used Custom Features

Some of the more commonly used Custom Options include the following:

Custom Option	Switch	Description
<b>Installation</b>		
Proxy Server	/PROXY	For license key verification. Internet access is required. If your network uses a proxy server then you will need to use this switch.
<b>General Custom Features</b>		
Date Range	/UADATE	Migrates email, calendars, and task items within a given date range.
Message Date Range	/MSGDATE	Migrates only messages within a given date range.
Calendar Date Range	/CALDATE	Migrates only calendars within a given date range.
Max Message Size	/MAXMSGSIZE	Set the Max Message Size as 20480 KB's. If the sum of the attachments causes the entire message to exceed 20480 KB's, the attachments will be removed and replaced with a text stub.
Max Attachment Size	/MAXATTACHSIZE	Any attachment with a size greater than this value (10240 is recommended) will be removed and replaced with a text stub.
Detach Attachments	/DETACH	Use this switch when the Max Attachment Size switch is enabled. When the attachment exceeds the maximum attachment size, the attachment will be placed into the directory specified by the /DETACH switch. The directory must already exist.
Recurring Calendar Entries	/D127	Recurring calendar entries will appear in the target as true recurring events, instead of separate individual events.
Migrate Unique Messages	/DEDUP	Migrate unique messages and to record the MD5 hash value of the messages into a new or existing file.
Deduping File Writes	/D165	Write the MD5 hash values immediately to the dedup file after each message instead of writing to memory. This will affect the speed of the migration, but allows better recovery from a crash.
Deduping Criteria	/D56	Only used when the /DEDUP switch is enabled, and it overrides the default behavior. Choose which fields to run the MD5 Hash algorithm against.
<b>Exchange/Outlook Specific</b>		
Message Store Top Level	/D135	Removes the message store name e.g. Personal Folders from displaying when converting from Exchange/Outlook. This is helpful when selecting folders or when mapping folders.
Message Store Root Folder	/D150	When Exchange/Outlook is the source, this switch removes the root folder name from the list of folders that is presented (e.g. "Personal Folders" or "Mailbox – John Smith").
Max PST	/MAXPST	Used to limit the size of the output PST file, and start creating another PST file when the first file has reached its limit, which is 1.5GB by default.

Public Folder Access	/EWSPUB	Enable this switch to read from or write to Public Folders.
<b>GroupWise Specific</b>		
Trusted Mode – MAPI	/TRUSTED	When Trusted Mode is enabled, this switch tells Transend Migrator to migrate GroupWise MAILBOXES without the need for each user password. This switch is used with the GroupWise API connection.
Trusted Mode – IMAP	/GWTRUSTED	When Trusted Mode is enabled, this switch tells Transend Migrator to migrate GroupWise MAILBOXES without the need for each user password. This switch is used with the GroupWise IMAP connection.
<b>Logging / Reporting</b>		
Debug Logging	/DEBUG	Adds additional logging to the log file, which is helpful when troubleshooting problems. It attempts to log every single step of the migration which causes the log file to get quite large.
Migration Report Level	/XMLREPORTLEVEL	Use this switch and value to determine the level of detail recorded into the XML report.

## Message Deduping

Transend Migrator has the ability to prevent duplicate message items from migrating. This feature is helpful in the event you want to restart a migration. It is also helpful when you restore many email archives from a particular person, and you want to output only the unique messages.

When deduping is turned on and when you perform an email migration, Transend Migrator performs a calculation called an MD5 hash on each message item to see if it is unique. It writes that the results of the MD5 hash into memory. At the end of your migration, the MD5 information is taken from memory and written to file.

The calculation is performed on the following metadata items to see if they are unique or different:

- Message Body
- Subject
- Date
- Sender
- Recipient List

These default metadata items can be changed, and you can also add additional requirements such as:

- Folder
- Attachment Header
- Attachment Data
- Unique ID

### Enable Deduping:

1. Select Migration Options from the menu.

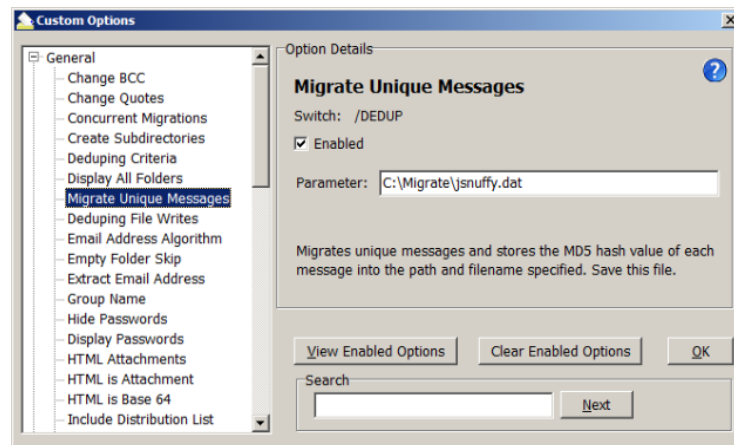


2. Select Custom Options from the sub menu.
3. Expand the General section to see the section choices.
4. Enable the section titled, “Migrate Unique Messages”.
5. Press OK to complete this custom option.

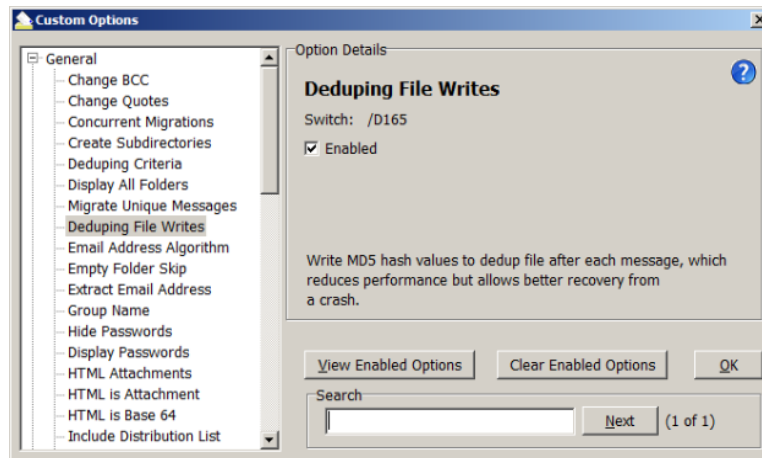
When no parameter is entered, Transend Migrator will first write the MD5 hash value of each message into memory, and then write that information into a file called md5.dat, and this file will be created inside the same directory as the master log file (tmlog.html).

### Suggested Deduping Options

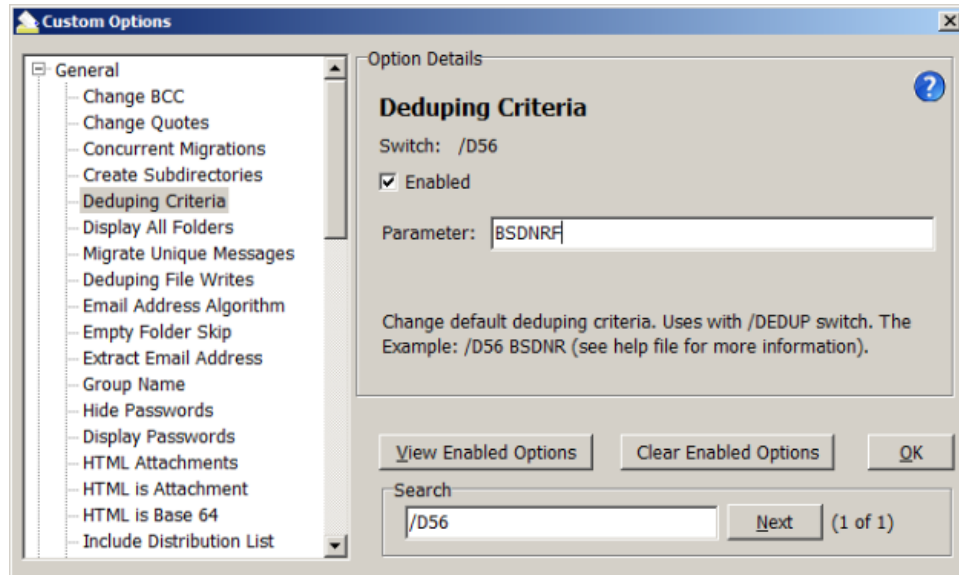
Sometimes, a migration will fail and end abnormally. When this happens, the MD5 information in memory does not get written to disk. Therefore, when this happens you will have some duplicate email items if you decide to migrate all message folders over again. Therefore, you can force Transend Migrator to write the MD5 information to disk immediately instead of waiting until the migration is complete.



1. Turn on deduping by enabling the Custom Option Setting called, “Migrate Unique Messages.”
2. Add a path and filename to the Parameter. Use an existing file or create a new file. Use the same file if you plan on deduping between migrations.



3. Enable the /D165 switch, which is titled, Deduping File Writes. This switch forces Transend Migrator to write the MD5 hash value to disk immediately rather than after the migration is over.



4. Optionally, enable the /D56 switch and then modify the default value, which is BSDNR. Add at the F value if you want to include the message folder as part of your deduping criteria. This might not be a good idea if migrating from Lotus Notes and you are migrating views and folders. This might be a good idea if you are migrating from another program and you want duplicate items in different folders. Perhaps, the folder is important.

### Deduping in Batch Mode

In batch mode, it is common practice to create an md5 hash file for each account migrated. In batch mode, variables are used so substitute a variable, such as \$var1, for the name of the dedup file. Often, a variable is a user name so consider using the user name as the variable. It is easier to keep track of the file if it is related to the user name, and you will only have to use one variable.

#### Note

You cannot share the dedup file with another process. Therefore, create a unique dedup file for each account migrated.

## Section 12: Command Line Processing

---

An alternate way of starting a batch migration is through the command line or with a batch file. Once all Email, or Address Book, or Calendar, or Tasks sections have been set you normally begin the migration by pressing the *Start Single Migration* or the *Start Batch Migration* button. You may also start a migration through a command line after saving your configuration using the *File | Save Configuration As...* menu choice.

1. Setup a migration project for one user or for a batch of accounts.
2. Load the user list if you are migrating in batch mode.
3. Save your configuration by selecting *File | Save Configuration As...* from the main Transend Migrator screen. Name the configuration file and keep it short. Once have saved your settings into a configuration file you can then run a batch migration from the command line. Review the *Command Line Syntax & Example* section for the command line detail.

### Command Line Syntax & Example

---

Syntax      TM10.EXE /CMDL /F <path and filename>

Example      TM10.EXE /CMDL /F C:\ProgramData\Transend\Project.tmd

---

TM10.EXE      This is the Transend Migrator executable. If you run this command all by itself then the Transend Migrator program will start in regular mode.

/CMDL      This switch tells Transend Migrator to run in command line mode. It expects the /F <filename> switch.

/F <filename>      The /F switch tells Transend Migrator to perform a migration based upon the settings saved inside the TMD filename specified.

---

### Additional Options

---

/CONCURRENT <n>      Allows # of concurrent migrations to be set through the command line rather than using the Migration Monitor interface.

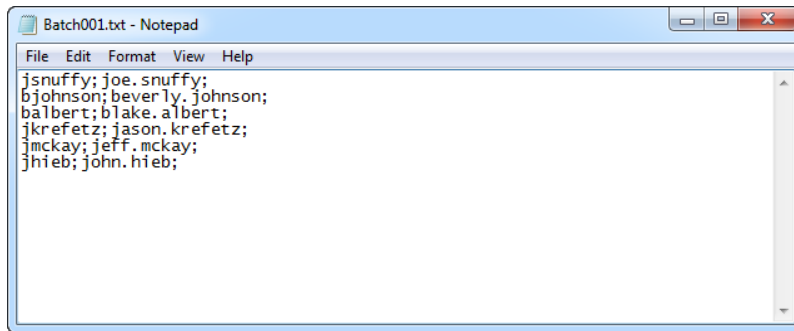
---

#### Note

The command line must be executed from the Transend Migrator installation directory. It will be easier to create a batch file using Notepad rather than manually running it from the command line. Here is an example of a simple batch file.

1. Start Transend Migrator and enter all the settings for one or more accounts.
2. Save your configuration by selecting *File | Save Configuration* from the main Transend Migrator screen. For this example, save your configuration file into *C:\Migrate\project.tmd*
3. Create a batch file and use the Batch File Example as a guide.

### **Batch File Example**



### **Run the Batch File**

Double-click on the batch file using Windows Explorer. Once the batch file starts it will load the Migration Monitor and begin migration. When the migration completes the Migration Monitor will exit.

### **Provide accounts in CSV file**

Normally, in a command line migration all of your settings and account information is saved in the Transend configuration file (TMD); however, you may save the account information inside a CSV file and reference that CSV file. This is useful when you will be automating the user list extraction and do not have the ability to save the user information in the TMD file. The CSV file will contain the values for the variables you define in the TMD file. Use the `/batchdata <file>` switch in addition to your other command line switch choices. Any values declared in the TMD file will be replaced, and the values in the CSV file will be used.

### **Batch File Example with CSV file containing user information**

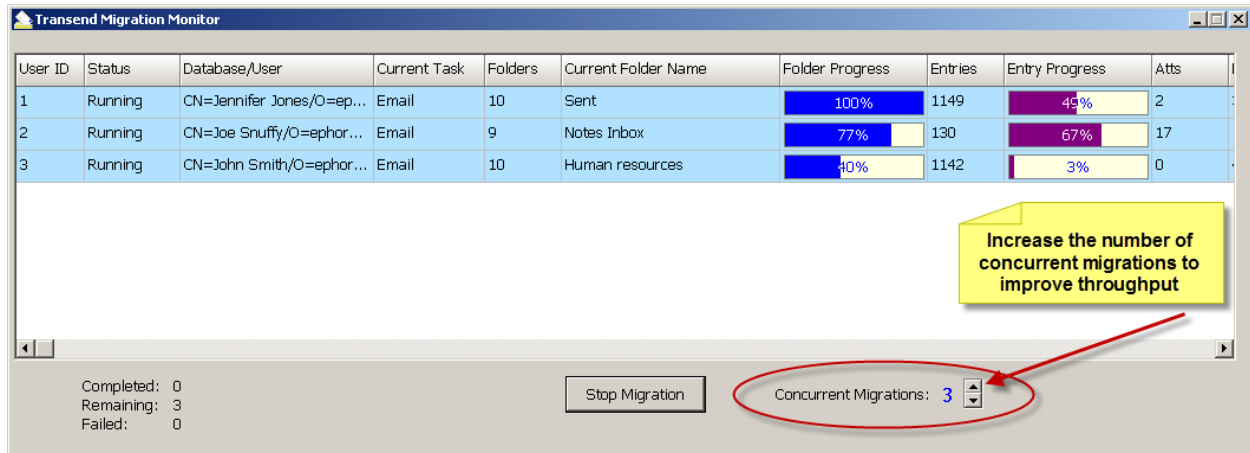
---

<b>Example</b>	<b>TM11.EXE /CMDL 1 /F C:\ProgramData\Transend\Project.tmd /batchdata C:\Migrate\Userlist.csv</b>
----------------	---

---

## Section 13: Migration Monitor

The *Migration Monitor* displays the real-time status of all user mailboxes as they are migrated. The *Migration Monitor* is a multi-threaded process, which means that multiple accounts can be migrated at the same time if the email systems support concurrent migrations, and if your license permits.



## Section 14: Concurrent Migrations

Transend Migrator has the ability to migrate more than one account at a time, and this is called *Concurrent Migrations*. During a batch process, Transend Migrator will migrate each account in entry order, which is defined in the *Batch Mode Data* table. It starts at the top and works through the list until the list is complete. If your license allows, you may migrate more than one account at a time. This allows you to complete your project more quickly.

Adjust the number of concurrent migrations when you begin a migration, and when the Migration Monitor appears. Transend Migrator will default to 1 concurrent migration. Press the up or down arrow next to Concurrent Migrations to adjust the number up or down.

### Performance

Increase the number of concurrent migrations to attain the best possible speed your system will allow. Each computer system is different, and each email system is different. Migrating data on a local machine gives you one rate of speed, while migrating across a local area network will give you a different rate of speed. The number of email messages and attachments will also affect your migration rate.

The best way to determine how fast you can perform a migration is by setting up a few test accounts and giving each account 1 Gigabyte of normal email data. Migrate one account at a time and review the rate of speed. Then, migrate the same test accounts and increase the number of concurrent migrations to 2, and so on. Evaluate the rate of speed and the combined rate of speed. Lower the number of concurrent migrations when you see a decrease in migration rate.

## Adding Migration Workstations

At some point, you will reach the maximum capability of your migration workstation, and you may want to add more workstations to decrease the amount of time it takes to migrate your accounts. Review how long it takes to migrate 1 GB of data on a single workstation, determine the number of concurrent migrations your workstation will allow, and then calculate how much faster your project will complete by adding workstations.

## Calculating Migration Time

Below are examples of an easy way to calculate how long it will take to complete a migration. Create a simple spreadsheet that lists the total number of gigabytes to migrate, the quantity of workstations you will use, and then the rate of speed your system will migrate. Then, enter a simple formula to calculate how long your migration will complete with one workstation. In these screenshot examples, your formula would be:  $((\text{Gigabytes}/\text{Rate})/\text{PC's})$ .

In Microsoft Excel, your formula would look similar to:  $=(\text{E14}/\text{E16})/\text{E15}$

### Spreadsheet Example 1

Item	Description	Value
E14 3	Total Quantity of Data to Migrate in Gigabytes	350
E15 4	Quantity of PC's to Process the data	1
E16 5	Gigabytes per Hour	3
Processing Time For Completion In Hours		116.67
Number of Days		4.86

In the spreadsheet example above, it will take 4.86 days to migrate 350 gigabytes of data at the rate of 3 gigabytes per hour. Therefore, you may want to add more machines to complete your project in a shorter amount of time.

### Spreadsheet Example 2

Item	Description	Value
3	Total Quantity of Data to Migrate in Gigabytes	350
4	Quantity of PC's to Process the data	5
5	Gigabytes per Hour	3
Processing Time For Completion In Hours		23.33
Number of Days		0.97

If you are using a simple formula, add more workstations to your spreadsheet to determine how much faster your project will complete. In Spreadsheet Example 2, the same migration will complete in 23 hours if 5 workstations are used at the same time. Be careful when adding computers to your project, and verify your source/target servers and network can handle the workload. In you are migrating into Microsoft Exchange, we recommend you turn off *Transaction Logging* so that your Exchange Server will not become overloaded and use up too much disk space. Turn *Transaction Logging* back on when your migration project is complete.

## Section 15: Schedule Migration

---

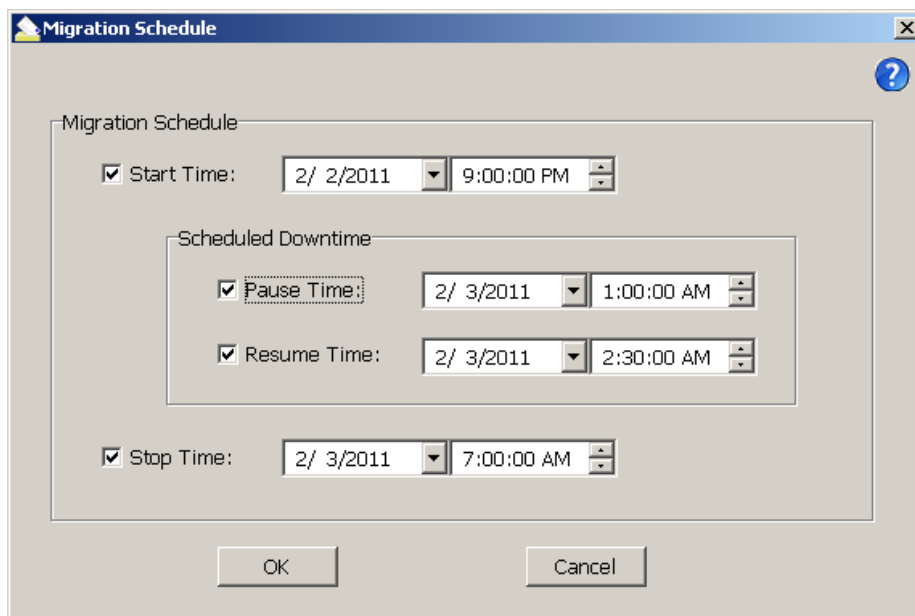
You may schedule a migration to begin at a later time by setting the start time on the *Migration Schedule* screen. Start later in the evening when you can receive optimal performance, bandwidth, and no interruption. If there are other processes that must begin while the migration is running then you may also pause the migration, and continue after the processes are complete.

You must configure your migration before you can schedule it. Pre-configure the E-Mail, Address Book, Calendar, and Tasks as they need to be set. Import your list of users if performing a batch migration, and then save this configuration by selecting *File | Save Configuration* from the Transend Migrator main menu.

### Caution

Once the schedule has been set it will become effective and begin only after pressing one of the Start Migration Buttons. Migration will not happen if you close Transend Migrator.

You do not have to set all options in the Migration Schedule. Only the values with an enabled checkbox will take effect after pressing the Start Migration Button.



## Section 16: Reporting / Logging

### Reporting

Migration reports in XML format will be created after each successful run, and can be viewed with Microsoft Excel. XML reports can be found inside the default subfolder or in a folder containing the name of the custom configuration, and can easily access by selecting *View / Migration Reports* from the main menu. Each time a migration is run a new Migration Report will be created, and it will be assigned an incremental number beginning with the number 1.

	A	B	C	D	E	F	G	H	I	J	K
	User ID	Status	Database/User	Time Started	Time Ended	Elapsed Time	Folder Count	Email Count	Address Count	Calendar Count	Task Count
1											
2	1	Completed	pdccx!\joe.snuffy	2/2/2011 18:26:56	2/2/2011 18:28:35	00:01:40	23	1731	0	0	0
3	2	Completed	pdccx!\jennifer.jones	2/2/2011 18:27:38	2/2/2011 18:28:57	00:01:19	23	575	0	0	0
4	3	Completed	pdccx!\john.smith	2/2/2011 18:27:39	2/2/2011 18:28:59	00:01:20	16	605	0	0	0
5	4	Completed	pdccx!\beverly.johnson	2/2/2011 18:28:37	2/2/2011 18:28:57	00:00:20	50	91	0	0	0
6											
7	Totals:						112	3002	0	0	0
8											
9											

The default detail contained within the XML Report contains the following information:

- User ID
- Database / User
- Time Ended
- Folder Count
- Address Count
- Task Count
- Skipped Entries
- Status
- Time Started
- Elapsed Time
- Email Count
- Calendar Count
- Attachment Count
- Data Rate (megabytes per hour)

Use the following switch and value to increase or decrease the level of detail in the XML Report:

Switch	Value	Description
/NOXMLREPORT		Use this switch to disable XML reporting. No XML report will be produced when this switch is used.
/XMLREPORTLEVEL	<n>	Use this switch and value to determine the level of detail recorded into the XML report. The default value is 1. Increase the value to 2 if you want to record Folder Names and Entry Counts for those folders.

### Note

Transend Migrator reports the number of attachments converted with each message; however please be aware that this number may include graphic images embedded within HTML documents. Therefore, the number of actual attachments visible in your email client, such as Word or Excel files, may be different than reported.



## Logging

Transend Migrator will create a master log file named *tmlog.html* inside the default system directory. This log file contains detailed information about the migration session. User specific log files will be called *Tmlog-#.html*. The number # will correspond with the specific job number for that user as found in the Migration Monitor. This file contains detailed information about a specific user. Since the log files are HTML they are viewable by using your Internet browser. If you want text based log files then use the */LTEXT* switch option located inside the Log File section in Custom Options.

You can find the log files inside one of the following system directories:

Windows XP	C:\Documents and Settings\All Users\Application Data\Transend
Windows Vista	
Windows 7	C:\ProgramData\Transend

Each time you migrate an account, Transend Migrator will create a user specific log file inside a subdirectory from one of the two system folders listed in the above table. This subdirectory will be called *default*, which is the same name as the default configuration TMD file containing all of the settings and options used in the user interface. If you create custom configuration files the subdirectory containing user log files will be given the custom configuration's name rather than *default*.

The following switches are available to change the way Transend Migrator records information inside the user specific log files.

Switch	Description
/LAP	This switch tells Transend Migrator to append to the existing log file instead of creating a new one on each run.
/LL	Use this to create a Summarylog.txt file.
/LNO	Use this switch to disable logging. Creating a log is enabled by default.
/LSUB	If enabled, each message converted will have its subject added to the log file.
/LTEXT	Use this switch to create text log files instead of HTML log files.
/LTS	Adds a timestamp value to each line in the log file.

## Section 17: Troubleshooting

---

### General Logon Errors

There are four possible error messages you may receive when attempting to log on to your email system.

1. **Invalid user name or ID:** This error generally appears only for IMAP, Outlook, and GroupWise. Check that you have entered the correct user name, including case and spelling.
2. **Invalid password:** As above, generally this will occur only with IMAP, Outlook or GroupWise. Check the spelling, punctuation, and case.
3. **Invalid database or directory:** This error can occur for systems where it is necessary to identify a directory where email files may be found. This would include Netscape, Eudora, cc:Mail archives, EML, and Web. It can also occur for systems where you have to identify a specific database file, such as a Lotus Notes .nsf file. For Notes, the file must exist in a readable directory. For the other systems mentioned, assuming that the directory itself exists, the program is checking for the presence of specific files. For example, the Netscape directory must have at least one .snm or .msf file. The Eudora directory must have a .mbx file, and the Pegasus directory must have a .pmm file.
4. **Unable to connect with mail system:** This is a generic error that can indicate a variety of problems. Close Transend Migrator and verify the connection with your email client. Use those same settings when migrating email data with Transend Migrator.

Usually more information is available about a logon problem in the log file. If the error message in the log file is not helpful, please send a copy to our technical support for further analysis.

### Antivirus and Spam Filters

If you have viruses in your email then your antivirus or spam filter might intercept those viruses during migration. Therefore, it is best to clean your email before or after performing a migration. If the message is intercepted during migration it could interfere with a successful migration.

If you have antivirus and spam prevention software running on your source or target server, and even the workstation performing the migration, you will slow down the amount of time it takes to migrate your data. To improve performance and to decrease the amount of time it takes to migrate your data turn off antivirus or spam filtering software. Any software designed to intercept email traffic will impede performance.

### Application Violations

These errors can be difficult to troubleshoot but are mostly related to corrupted email messages, or files that are not email messages but you tried to convert them. If the latter is the case then remove the offending file.

1. If an application violation (AV) happens then make note of the folder the problem happened in.
2. Enable the /LSUB switch option for logging. The /LSUB switch option will log each message subject converted (or attempted) into the log file.
3. Attempt an isolated conversion of that specific folder. When the AV happens close Transend Migrator.
4. Open the Log File with Notepad or alternate text editor.
5. Make note of the last message converted. This will tell you where to look for the problem.

6. Open the source message account and search for the message subject causing the AV.
7. Move that message into a TEMP or SAVE message folder.
8. Optionally, move the next message into the same TEMP or SAVE folder. Quite often, it was not the last message converted that caused the AV. It could be the next one in line. Therefore, this is why you need to move the next one into the TEMP or SAVE message folder.
9. Begin another migration, but this time skip the TEMP or SAVE message folder. When the migration is successful you can continue on. You will have successfully identified the corrupted or problem messages.

### **Microsoft Outlook**

Microsoft Outlook must be the default email system for Windows when migrating Outlook email data. At least one profile must be created so that Outlook will set itself up for your email environment. Once this is done then no other profiles are needed if using the special syntax to access accounts directly.

You do not need a profile to migrate multiple Exchange accounts. Profiles are not required. But, your Windows account must have permissions to access the account you are accessing. Contact your Network Administrator to gain access to other people's email accounts.

When you are using the Transend Migrator graphical User Interface you can migrate other people's email accounts as long as you have created a profile for that user, and have the login ID and password for that user. This is not the recommended method. The recommended method is to be granted access permissions so that a password is not needed and so that a profile is not needed.

If you are migrating multiple users and/or will be using the Batch Mode Processor then give your Windows account (the account or group doing the migration) the RECEIVE-AS permissions on the Mailbox Database for your Exchange Server.

### **Novell GroupWise**

If you are migrating between Novell GroupWise and Microsoft Outlook you may receive an Access Violation. If this happens it is often a conflict between the GroupWise email client and the Outlook email client.

1. Upgrade your email clients to the latest versions and/or upgrade your Windows service packs to the latest versions.
2. Make sure the "Novell GroupWise" Outlook profile is the default email profile for Outlook.
3. Consider using IMAP4 as the conversion method for GroupWise email. This will eliminate the MAPI32 conflict.
4. Consider performing your email migration in two steps. Migrate from GroupWise mail into a Transport File, and then migrate the Transport File to Outlook/Exchange.
5. In some cases, Access Violations can be avoided by migrating directly to ANSI style Outlook PST files. Use the /OLDPST switch option to create the old style (pre-2003) of PST file.

### **IMAP4 Connections**

Make sure you have the correct username, server address, and password for the account to be migrated. Some servers require the entire user email address rather than just the username. For example, you may need to enter [jsmith@acme.com](mailto:jsmith@acme.com) instead of jsmith. If your IMAP server uses [SSL security](#) then enable the /SSL option.

## Section 18: Technical Support

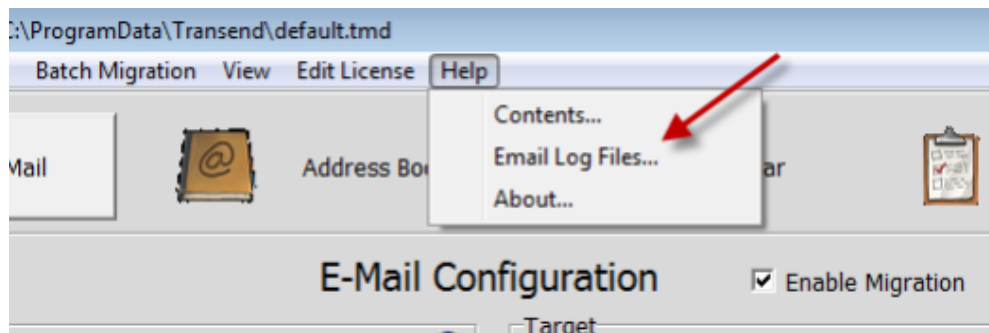
Technical support is available to help you understand how to use Transend Migrator with your migration project. Please review the Help File and online resources before contacting technical support.

Technical support is available Monday through Friday, 9:00AM - 5:00PM (Pacific Time).

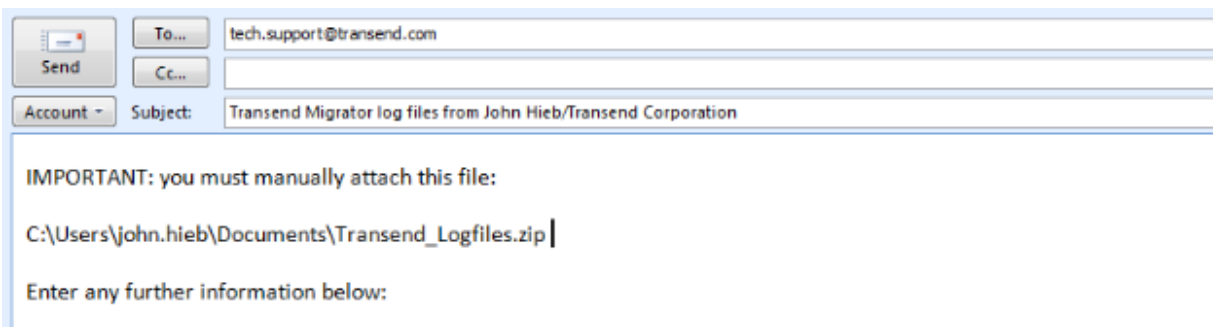
You are encouraged to submit questions through email. This will allow us time to properly research your situation and make appropriate recommendations.

### *Sending Log Files to Transend Technical Support*

It is important to include a copy of your log files when submitting a support request. You may send the log files individually, or send the log files using the *Email Log Files* menu feature from the Transend Migrator interface using the following procedures:



Select *Email Log Files* from the menu list. Transend Migrator will attempt to open your default email program and then create a new message similar to the example, below.



### Notice

The path to the log file package (a zip file containing your log files, report, and settings file) will be inserted into the body of the email message. In the example, the log file path and filename is at C:\Users\john.hieb\Documents\Transend\_Logfiles.zip. Your path will be similar. Using your email program, insert the log file package. Use the path and filename listed in your email message.

Before contacting technical support, we recommend that you are using the current patches or service packs for your hardware, your operating system and software. Also, download the latest version of Transend Migrator from [www.transend.com](http://www.transend.com). Review the [What's New](#) section of the Transend web site to review the latest release information.

Email: [tech.support@transend.com](mailto:tech.support@transend.com).

Phone: (650) 324-5370

Transend Corporation

225 Emerson Street

Palo Alto, CA 94301

[www.transend.com](http://www.transend.com)